

# 2021 Data Book

Maryland Higher Education Commission





**Larry Hogan**  
Governor

**Boyd K. Rutherford**  
Lt. Governor

---

## Maryland Higher Education Commission

Andrew R. Smarick, Chair

Donna M. Mitchell, Vice Chair

Senchal D. Barrolle, Esq.

Vivian S. Boyd, Ph.D.

Lewis R. Brown, Ed.D.

James E. Coleman

Vera R. Jackson, Ph.D.

Charles McDaniels, Jr.

Sydney Miller, Student Commissioner

James B. Sellinger, Sr.

Mary Pat Seurkamp, Ph.D.

John W. Yaeger, Ed.D.

---

**James D. Fielder, Jr., Ph.D.**  
Secretary

Published February 2021

**REVISED APRIL 2021**

# Table of Contents

COMPARATIVE HIGHER EDUCATION STATISTICS: MARYLAND AND THE NATION	1
--	---

## STUDENTS

---

AVERAGE SAT SCORES OF ENTERING FRESHMEN, FALL 2020	2
UNDERGRADUATE ENROLLMENT, FALL 2019 <b>Revised April 2021</b>	3
GRADUATE AND PROFESSIONAL ENROLLMENT, FALL 2019	5
UNDERGRADUATE STUDENTS AGE 25 AND OLDER, FALL 2019	6
UNDERGRADUATE, GRADUATE, AND PROFESSIONAL ENROLLMENT BY RACE/ETHNICITY AND BY GENDER, FALL 2019	7
REMEDICATION RATES OF RECENT MARYLAND PUBLIC HIGH SCHOOL GRADUATES ENROLLED AT MARYLAND PUBLIC INSTITUTIONS, 2018-2019	9
REMEDICATION RATES OF RECENT MARYLAND PUBLIC HIGH SCHOOL GRADUATES ENROLLED AT MARYLAND PUBLIC INSTITUTIONS BY PLACE OF RESIDENCE, 2018-2019	10
PERCENTAGE PELL ENROLLMENT BY INSTITUTION, FALL 2018	11

## RETENTION & GRADUATION

---

RETENTION AND GRADUATION RATES AT FOUR-YEAR PUBLIC INSTITUTIONS IN MARYLAND	12
COMMUNITY COLLEGE FOUR-YEAR GRADUATION AND TRANSFER RATES, ENTERING CLASS OF 2015	13
NUMBER OF COMMUNITY COLLEGE STUDENTS TRANSFERRING TO FOUR-YEAR PUBLIC INSTITUTIONS IN FALL 2019	13
DEGREE PROGRESS, FOUR YEARS AFTER INITIAL ENROLLMENT, MARYLAND COMMUNITY COLLEGES, ENTERING CLASS OF 2014	15

## DEGREES

---

DEGREES BY MAJOR PROGRAM, 2019-2020	17
DEGREES BY INSTITUTION, 2019-2020	18
DEGREES BY RACE/ETHNICITY AND BY GENDER, 2019-2020	19

## FACULTY & STAFF

---

FULL-TIME AND PART-TIME FACULTY, FALL 2019	21
AVERAGE SALARY OF FULL-TIME FACULTY, FALL 2019	22
FULL-TIME FACULTY BY RACE/ETHNICITY AND BY GENDER, FALL 2019	23
FULL-TIME AND PART-TIME STAFF, FALL 2019	25
FULL-TIME STAFF BY RACE/ETHNICITY AND BY GENDER, FALL 2019	27

## REVENUES & EXPENDITURES

---

COMMUNITY COLLEGES: UNRESTRICTED REVENUES, FY 2020	29
COMMUNITY COLLEGES: UNRESTRICTED EXPENDITURES, FY 2020	29

---

Asterisks (\*) indicate suppressed student data that are less than 10 (n<10)

FOUR-YEAR PUBLIC COLLEGES AND UNIVERSITIES: UNRESTRICTED REVENUES, FY 2020	31
FOUR-YEAR PUBLIC COLLEGES AND UNIVERSITIES: UNRESTRICTED EXPENDITURES, FY 2020	31
AID TO INDEPENDENT INSTITUTIONS, FY 2020	33
TOTAL STATE CAPITAL BUDGET AUTHORIZATIONS BY CAMPUS, FY 2017 - FY 2021	33

## **TUITION & FEES**

---

COMMUNITY COLLEGE TUITION AND FEES FOR FULL-TIME STUDENTS (PER CREDIT HOUR), FY 2017 - FY 2021, RESIDENTS OF SERVICE AREA	35
COMMUNITY COLLEGE TUITION AND FEES FOR FULL-TIME STUDENTS (PER CREDIT HOUR), FY 2017 - FY 2021, MARYLAND RESIDENTS, OUTSIDE OF SERVICE AREA	35
COMMUNITY COLLEGE TUITION AND FEES FOR FULL-TIME STUDENTS (PER CREDIT HOUR), FY 2017 - FY 2021, OUT-OF-STATE RESIDENTS	36
FOUR-YEAR PUBLIC INSTITUTION UNDERGRADUATE TUITION AND FEES, FY 2017 - FY 2021	36
FOUR-YEAR PUBLIC INSTITUTION GRADUATE TUITION PER CREDIT HOUR, FY 2017 - FY 2021	37

## **FINANCIAL AID**

---

CHARACTERISTICS OF UNDERGRADUATE FINANCIAL AID RECIPIENTS AT COMMUNITY COLLEGES, FY 2017 - FY 2019	38
CHARACTERISTICS OF UNDERGRADUATE FINANCIAL AID RECIPIENTS AT FOUR-YEAR PUBLIC INSTITUTIONS, FY 2017 - FY 2019	38
CHARACTERISTICS OF UNDERGRADUATE FINANCIAL AID RECIPIENTS AT STATE-AIDED INDEPENDENT INSTITUTIONS, FY 2017 - FY 2019	39
FINANCIAL AID AWARDED AT COMMUNITY COLLEGES, FY 2017 - FY 2019	39
FINANCIAL AID AWARDED TO UNDERGRADUATES AT FOUR-YEAR PUBLIC INSTITUTIONS, FY 2017 - FY 2019	40
FINANCIAL AID AWARDED TO UNDERGRADUATES AT STATE-AIDED INDEPENDENT INSTITUTIONS, FY 2017 - FY 2019	40
MARYLAND FINANCIAL AID PROGRAM EXPENDITURES, FY 2020	41

## **PRIVATE CAREER SCHOOLS**

---

ENROLLMENT BY SCHOOL, NUMBER OF PROGRAMS, NUMBER OF COMPLETERS, AND EMPLOYMENT RATES, 2018-2019	42
---	----

## **DISTANCE EDUCATION**

---

ENROLLMENT IN DISTANCE EDUCATION CREDIT COURSES BY LEVEL AND SEGMENT, CY 2019	45
NUMBER OF DISTANCE EDUCATION CREDIT-BEARING COURSE SECTIONS, CY 2019	45
UNDERGRADUATE STUDENT HEADCOUNT BY SEGMENT AND ENROLLMENT PATTERN, CY 2019	45
GRADUATE STUDENT HEADCOUNT BY SEGMENT AND ENROLLMENT PATTERN, CY 2019	45

TECHNICAL NOTES	46
-----------------	----

The tables throughout the pages of this Data Book are based upon analyses of a wide array of sources. Each table clearly identifies the source or sources of data; most of the Data Book reflect the data collections submitted to the Maryland Higher Education Commission (MHEC) by the postsecondary institutions within the State. Additionally, the final pages of this book contain a number of Technical Notes designed to accompany these tables; they are organized in the order of the Data Book's sections and are aligned, within each section, to the order of the tables. These Notes are designed to provide further information regarding the data in these tables, such as additional explanations of the data or the methodologies used to produce the tables.

# COMPARATIVE HIGHER EDUCATION STATISTICS: MARYLAND AND THE NATION

	MARYLAND	NATION
<b>Educational Attainment (2018)</b>		
At least Some College	66.3%	61.6%
At least an Associate Degree	47.6%	41.3%
At least a Bachelor's Degree	40.8%	32.7%
At least a Graduate or Professional Degree	18.9%	12.7%
Percentage of high school graduates who enrolled in higher education in their home state (Fall 2018)	78.0%	80.0%
<b>SAT Scores for High School Seniors (2020)</b>		
Mean Evidence-Based Reading and Writing Score (ERW)	522	528
Mean Math Score	507	523
Mean Combined ERW and Math	1029	1051
<b>Projected Change in the Number of High School Graduates</b>		
Academic Year 2019 to Academic Year 2028	9.9%	0.5%
<b>Higher Education Enrollments (Fall 2018)</b>		
% Undergraduate	80.1%	84.5%
% Women	55.6%	57.0%
% African American	26.3%	12.0%
% Hispanic	9.2%	17.8%
% Asian	7.5%	6.3%
% White	42.3%	49.9%
% All Minorities	47.4%	40.5%
% Underrepresented Minority	35.8%	30.5%
% Foreign/Nonresident Alien	6.1%	5.0%
<b>Distribution of Campus Enrollments (Fall 2018)</b>		
Public 2-year Institutions	31.6%	28.2%
Public 4-year Institutions	52.1%	45.7%
Private Institutions	16.3%	26.1%
Projected Increase at Public Two-Year Campuses (Fall 19 to Fall 28)	25.7%	2.7%
Projected Increase at Public Four-Year Campuses (Fall 19 to Fall 28)	8.0%	1.8%
<b>Distribution of Degrees Conferred (2017-2018)</b>		
Associate Degrees	22.2%	25.3%
Bachelor's Degrees	46.5%	49.5%
Master's Degrees	27.3%	20.6%
Doctoral/First Professional Degrees	4.0%	4.6%
<b>Average Tuition and Fees for Resident Undergraduates (2020-2021)</b>		
Community Colleges (In-District)	\$4,810	\$3,770
Four-Year Public Institutions	\$10,130	\$10,560
<b>State Funding for Higher Education</b>		
State Operating Expenses (% change 2018-2019 to 2019-2020)	Up 2.8%	Up 5.0%
State Spending on Student Financial Aid (% change 2017-2018 to 2018-2019)	Down 3.5%	Up 3.5%

## Sources:

The Chronicle of Higher Education, *Almanac Issue 2020-2021*, August 2020.

The College Board, *SAT Suite of Assessments Annual Report: Total Group*, October 2020.

The College Board, *SAT Suite of Assessments Annual Report: Maryland*, October 2020.

The College Board, *Trends in College Pricing 2020*, Table CP-5 and Table CP-1.

U.S. Department of Education, National Center for Education Statistics, *Projections of Education Statistics to 2028*, May 2020.

National Association of State Student Grant and Aid Programs, *50th Annual Survey Report on State-Sponsored Student Financial Aid, 2018-2019 Academic Year*, Table 3.

See Technical Notes for more information.



# students

## AVERAGE SAT SCORES OF ENTERING FRESHMEN, Fall 2020

Institution	Evidence-Based Reading and Writing Score		Mathematics	Combined Scores	25th Percentile	75th Percentile
Bowie State University	461	487	487	948	870	1000
Coppin State University	461	444	444	905	830	960
Frostburg State University	519	506	506	1025	910	1120
Salisbury University	594	583	583	1177	1110	1248
Towson University	574	555	555	1129	1050	1190
University of Baltimore	520	493	493	1013	920	1090
University of Maryland, Baltimore County	622	629	629	1251	1160	1330
University of Maryland, College Park	664	683	683	1347	1270	1450
University of Maryland Eastern Shore	476	459	459	935	850	1010
Morgan State University	492	506	506	998	930	1060
St. Mary's College of Maryland	603	573	573	1176	1090	1250

**Source:**

Maryland Higher Education Commission, S-11 Forms, 2020  
See Technical Notes for more information.

## UNDERGRADUATE ENROLLMENT, Fall 2019

Institution	Total	Full-Time	Part-Time	% MD Residents	
<b>COMMUNITY COLLEGES</b>					
Allegany College of Maryland	2,584	1,032	39.9%	1,552	55.4%
Anne Arundel Community College	12,655	3,604	28.5%	9,051	97.3%
Baltimore City Community College	4,909	1,579	32.2%	3,330	89.4%
Carroll Community College	3,115	1,088	34.9%	2,027	97.2%
Cecil College	2,377	762	32.1%	1,615	86.5%
Chesapeake College	2,184	563	25.8%	1,621	97.6%
College of Southern Maryland	6,351	2,257	35.5%	4,094	98.6%
Community College of Baltimore County	17,732	5,053	28.5%	12,679	92.4%
Frederick Community College	6,129	1,843	30.1%	4,286	97.8%
Garrett College	651	412	63.3%	239	80.8%
Hagerstown Community College	3,848	1,061	27.6%	2,787	79.2%
Harford Community College	5,705	1,932	33.9%	3,773	96.1%
Howard Community College	9,110	3,194	35.1%	5,916	93.2%
Montgomery College	21,260	7,305	34.4%	13,955	86.6%
Prince George's Community College	11,788	3,508	29.8%	8,280	94.1%
Wor-Wic Community College	2,890	712	24.6%	2,178	96.5%
<b>Sub-Total</b>	<b>113,288</b>	<b>35,905</b>	<b>31.7%</b>	<b>77,383</b>	<b>91.6%</b>
<b>FOUR-YEAR PUBLIC INSTITUTIONS</b>					
Bowie State University	5,227	4,329	82.8%	898	89.4%
Coppin State University	2,383	1,804	75.7%	579	81.2%
Frostburg State University	4,429	3,522	79.5%	907	83.7%
Salisbury University	7,686	7,090	92.2%	596	86.1%
Towson University	19,619	17,209	87.7%	2,410	87.1%
University of Baltimore	2,097	1,192	56.8%	905	94.1%
University of Maryland, Baltimore	878	695	79.2%	183	93.7%
University of Maryland, Baltimore County	11,060	9,436	85.3%	1,624	91.0%
University of Maryland, College Park	30,511	28,390	93.0%	2,121	72.6%
University of Maryland Eastern Shore	2,333	2,095	89.8%	238	78.0%
University of Maryland Global Campus	46,162	9,472	20.5%	36,690	35.9%
Morgan State University	6,461	5,759	89.1%	702	69.6%
St. Mary's College of Maryland	1,491	1,435	96.2%	56	93.6%
<b>Sub-Total</b>	<b>140,337</b>	<b>92,428</b>	<b>65.9%</b>	<b>47,909</b>	<b>66.5%</b>

Note: Table revised April 2021 to reflect corrected % MD Residents data.



**UNDERGRADUATE ENROLLMENT, Fall 2019 (continued)**

<b>Institution</b>	<b>Total</b>	<b>Full-Time</b>		<b>Part-Time</b>		<b>% MD Residents</b>
<b>STATE-AIDED INDEPENDENT INSTITUTIONS</b>						
Capitol Technology University	400	340	85.0%	60	15.0%	70.3%
Goucher College	1,449	1,325	91.4%	124	8.6%	42.2%
Hood College	1,126	1,057	93.9%	69	6.1%	72.4%
Johns Hopkins University	6,256	5,762	92.1%	494	7.9%	11.0%
Loyola University Maryland	3,925	3,896	99.3%	29	0.7%	20.3%
Maryland Institute College of Art	1,749	1,666	95.3%	83	4.7%	21.4%
McDaniel College	1,737	1,664	95.8%	73	4.2%	70.2%
Mount St. Mary's University	1,898	1,762	92.8%	136	7.2%	57.1%
Notre Dame of Maryland University	783	533	68.1%	250	31.9%	92.1%
St. John's College	494	490	99.2%	4	0.8%	12.1%
Stevenson University	3,107	2,724	87.7%	383	12.3%	77.1%
Washington Adventist University	945	723	76.5%	222	23.5%	73.5%
Washington College	1,288	1,265	98.2%	23	1.8%	41.3%
<b>Sub-Total</b>	<b>25,157</b>	<b>23,207</b>	<b>92.2%</b>	<b>1,950</b>	<b>7.8%</b>	<b>40.8%</b>
<b>OTHER PRIVATE INSTITUTIONS</b>						
Bais HaMedrash and Mesivta of Baltimore	72	72	100.0%	0	0.0%	48.6%
Faith Theological Seminary	41	10	24.4%	31	75.6%	85.4%
Lincoln College of Technology	530	413	77.9%	117	22.1%	90.6%
Ner Israel Rabbinical College	294	294	100.0%	0	0.0%	50.3%
Reid Temple Bible College	19	0	0.0%	19	100.0%	89.5%
St. Mary's Seminary and University	2	2	100.0%	0	0.0%	50.0%
Women's Institute of Torah Seminary	119	72	60.5%	47	39.5%	87.4%
Yeshiva College of the Nation's Capital	18	18	100.0%	0	0.0%	33.3%
<b>Sub-Total</b>	<b>1,095</b>	<b>881</b>	<b>80.5%</b>	<b>214</b>	<b>19.5%</b>	<b>75.4%</b>
<b>TOTAL - ALL CAMPUSES</b>	<b>279,877</b>	<b>152,421</b>	<b>54.5%</b>	<b>127,456</b>	<b>45.5%</b>	<b>74.4%</b>

**Source:**

Maryland Higher Education Commission, Enrollment Information System, 2019

See Technical Notes for more information.

Note: Table revised April 2021 to reflect corrected % MD Residents data.

## GRADUATE AND PROFESSIONAL ENROLLMENT, Fall 2019

Institution	Total	Full-Time		Part-Time	
<b>FOUR-YEAR PUBLIC INSTITUTIONS</b>					
Bowie State University	944	476	50.4%	468	49.6%
Coppin State University	341	113	33.1%	228	66.9%
Frostburg State University	749	236	31.5%	513	68.5%
Salisbury University	931	530	56.9%	401	43.1%
Towson University	3,090	1,017	32.9%	2,073	67.1%
University of Baltimore	2,379	997	41.9%	1,382	58.1%
University of Maryland, Baltimore	5,949	4,399	73.9%	1,550	26.1%
University of Maryland, Baltimore County	2,542	1,257	49.4%	1,285	50.6%
University of Maryland, College Park	10,232	7,877	77.0%	2,355	23.0%
University of Maryland Eastern Shore	553	345	62.4%	208	37.6%
University of Maryland Global Campus	12,119	90	0.7%	12,029	99.3%
Morgan State University	1,302	999	76.7%	303	23.3%
St. Mary's College of Maryland	22	21	95.5%	1	4.5%
<b>Sub-Total</b>	<b>41,153</b>	<b>18,357</b>	<b>44.6%</b>	<b>22,796</b>	<b>55.4%</b>
<b>STATE-AIDED INDEPENDENT INSTITUTIONS</b>					
Capitol Technology University	340	158	46.5%	182	53.5%
Goucher College	719	74	10.3%	645	89.7%
Hood College	926	150	16.2%	776	83.8%
Johns Hopkins University	20,823	9,145	43.9%	11,678	56.1%
Loyola University Maryland	1,548	445	28.7%	1,103	71.3%
Maryland Institute College of Art	478	278	58.2%	200	41.8%
McDaniel College	1,203	107	8.9%	1,096	91.1%
Mount St. Mary's University	464	218	47.0%	246	53.0%
Notre Dame of Maryland University	1,494	361	24.2%	1,133	75.8%
St. John's College	48	32	66.7%	16	33.3%
Stevenson University	472	74	15.7%	398	84.3%
Washington Adventist University	133	48	36.1%	85	63.9%
<b>Sub-Total</b>	<b>28,648</b>	<b>11,090</b>	<b>38.7%</b>	<b>17,558</b>	<b>61.3%</b>
<b>OTHER PRIVATE INSTITUTIONS</b>					
Faith Theological Seminary	73	43	58.9%	30	41.1%
Maryland University of Integrative Health	891	571	64.1%	320	35.9%
Ner Israel Rabbinical College	149	129	86.6%	20	13.4%
SANS Technology Institute	668	668	100.0%	0	0.0%
St. Mary's Seminary and University	159	43	27.0%	116	73.0%
<b>Sub-Total</b>	<b>1,940</b>	<b>1,454</b>	<b>74.9%</b>	<b>486</b>	<b>25.1%</b>
<b>TOTAL - ALL CAMPUSES</b>	<b>71,741</b>	<b>30,901</b>	<b>43.1%</b>	<b>40,840</b>	<b>56.9%</b>

**Source:**

Maryland Higher Education Commission, Enrollment Information System, 2019  
See Technical Notes for more information.



# UNDERGRADUATE STUDENTS AGE 25 AND OLDER, Fall 2019

Institution	Students	Percentage of Total		
		Undergraduate Enrollment	Full-Time	Part-Time
<b>COMMUNITY COLLEGES</b>				
Allegany College of Maryland	621	24.0%	195 31.4%	426 68.6%
Anne Arundel Community College	4,327	34.2%	653 15.1%	3,674 84.9%
Baltimore City Community College	2,557	52.1%	495 19.4%	2,062 80.6%
Carroll Community College	694	22.3%	104 15.0%	590 85.0%
Cecil College	654	27.5%	119 18.2%	535 81.8%
Chesapeake College	555	25.4%	61 11.0%	494 89.0%
College of Southern Maryland	1,696	26.7%	300 17.7%	1,396 82.3%
Community College of Baltimore County	7,127	40.2%	1,069 15.0%	6,058 85.0%
Frederick Community College	1,602	26.1%	237 14.8%	1,365 85.2%
Garrett College	72	11.1%	34 47.2%	38 52.8%
Hagerstown Community College	1,116	29.0%	134 12.0%	982 88.0%
Harford Community College	1,545	27.1%	219 14.2%	1,326 85.8%
Howard Community College	3,071	33.7%	462 15.0%	2,609 85.0%
Montgomery College	6,444	30.3%	963 14.9%	5,481 85.1%
Prince George's Community College	4,301	36.5%	587 13.6%	3,714 86.4%
Wor-Wic Community College	1,025	35.5%	159 15.5%	866 84.5%
<b>Sub-Total</b>	<b>37,407</b>	<b>33.0%</b>	<b>5,791 15.5%</b>	<b>31,616 84.5%</b>
<b>FOUR-YEAR PUBLIC INSTITUTIONS</b>				
Bowie State University	904	17.3%	526 58.2%	378 41.8%
Coppin State University	866	36.3%	450 52.0%	416 48.0%
Frostburg State University	592	13.4%	175 29.6%	417 70.4%
Salisbury University	553	7.2%	375 67.8%	178 32.2%
Towson University	2,269	11.6%	1,271 56.0%	998 44.0%
University of Baltimore	1,140	54.4%	441 38.7%	699 61.3%
University of Maryland, Baltimore	451	51.4%	301 66.7%	150 33.3%
University of Maryland, Baltimore County	1,702	15.4%	911 53.5%	791 46.5%
University of Maryland, College Park	1,798	5.9%	1,094 60.8%	704 39.2%
University of Maryland Eastern Shore	277	11.9%	158 57.0%	119 43.0%
University of Maryland Global Campus	34,292	74.3%	6,907 20.1%	27,385 79.9%
Morgan State University	947	14.7%	585 61.8%	362 38.2%
St. Mary's College of Maryland	58	3.9%	34 58.6%	24 41.4%
<b>Sub-Total</b>	<b>45,849</b>	<b>32.7%</b>	<b>13,228 28.9%</b>	<b>32,621 71.1%</b>
<b>STATE-AIDED INDEPENDENT INSTITUTIONS</b>				
Capitol Technology University	80	20.0%	46 57.5%	34 42.5%
Goucher College	133	9.2%	24 18.0%	109 82.0%
Hood College	115	10.2%	78 67.8%	37 32.2%
Johns Hopkins University	323	5.2%	41 12.7%	282 87.3%
Loyola University Maryland	34	0.9%	13 38.2%	21 61.8%
Maryland Institute College of Art	119	6.8%	61 51.3%	58 48.7%
McDaniel College	64	3.7%	23 35.9%	41 64.1%
Mount St. Mary's University	160	8.4%	70 43.8%	90 56.3%
Notre Dame of Maryland University	284	36.3%	68 23.9%	216 76.1%
St. John's College	26	5.3%	25 96.2%	* 3.8%
Stevenson University	383	12.3%	89 23.2%	294 76.8%
Washington Adventist University	323	34.2%	249 77.1%	74 22.9%
Washington College	17	1.3%	12 70.6%	* 29.4%
<b>Sub-Total</b>	<b>2,061</b>	<b>8.2%</b>	<b>799 38.8%</b>	<b>1,262 61.2%</b>
<b>OTHER PRIVATE INSTITUTIONS</b>				
Bais HaMedrash and Mesivta of Baltimore	*	*	* *	* *
Faith Theological Seminary	41	100.0%	10 24.4%	31 75.6%
Lincoln College of Technology	243	45.8%	167 68.7%	76 31.3%
Ner Israel Rabbinical College	142	48.3%	27 19.0%	115 81.0%
Reid Temple Bible College	18	94.7%	* *	* *
St. Mary's Seminary and University	*	*	* *	* *
Women's Institute of Torah Seminary	*	*	* *	* *
Yeshiva College of the Nation's Capital	*	*	* *	* *
<b>Sub-Total</b>	<b>453</b>	<b>41.4%</b>	<b>209 46.1%</b>	<b>244 53.9%</b>
<b>TOTAL - ALL CAMPUSES</b>	<b>85,770</b>	<b>30.6%</b>	<b>20,027 23.3%</b>	<b>65,743 76.7%</b>

**Source:**

Maryland Higher Education Commission, Enrollment Information System, 2019  
See Technical Notes for more information.

**UNDERGRADUATE, GRADUATE, AND PROFESSIONAL ENROLLMENT  
BY RACE/ETHNICITY AND BY GENDER, Fall 2019**

<b>Institution</b>	<b>Total Enrollment</b>	Hispanic/ Latino, any race	Black/ African American	American Indian or Alaska Native
<b>COMMUNITY COLLEGES</b>				
Allegany College of Maryland	2,584	*	243	*
Anne Arundel Community College	12,655	1,182	2,141	41
Baltimore City Community College	4,909	165	3,720	*
Carroll Community College	3,115	143	139	*
Cecil College	2,377	135	184	*
Chesapeake College	2,184	134	302	18
College of Southern Maryland	6,351	461	1,665	31
Community College of Baltimore County	17,732	1,073	6,675	65
Frederick Community College	6,129	801	799	13
Garrett College	651	*	112	*
Hagerstown Community College	3,848	293	469	*
Harford Community College	5,705	332	924	18
Howard Community College	9,110	1,012	2,681	20
Montgomery College	21,260	5,418	5,582	63
Prince George's Community College	11,788	1,596	8,105	32
Wor-Wic Community College	2,890	164	676	*
<b>Sub-Total</b>	<b>113,288</b>	<b>12,972</b>	<b>34,417</b>	<b>331</b>
<b>FOUR-YEAR PUBLIC INSTITUTIONS</b>				
Bowie State University	6,171	259	4,963	11
Coppin State University	2,724	67	2,225	11
Frostburg State University	5,178	239	1,391	*
Salisbury University	8,617	376	1,232	59
Towson University	22,709	1,816	5,176	20
University of Baltimore	4,476	253	1,835	20
University of Maryland, Baltimore	6,827	489	1,197	*
University of Maryland, Baltimore County	13,602	1,030	2,423	20
University of Maryland, College Park	40,743	3,283	4,325	41
University of Maryland Eastern Shore	2,886	126	1,501	*
University of Maryland Global Campus	58,281	7,691	16,608	275
Morgan State University	7,763	303	6,243	*
St. Mary's College of Maryland	1,513	98	151	*
<b>Sub-Total</b>	<b>181,490</b>	<b>16,030</b>	<b>49,270</b>	<b>488</b>
<b>STATE-AIDED INDEPENDENT INSTITUTIONS</b>				
Capitol Technology University	740	64	205	*
Goucher College	2,168	135	407	*
Hood College	2,052	194	284	*
Johns Hopkins University	27,079	2,372	2,059	42
Loyola University Maryland	5,473	542	488	*
Maryland Institute College of Art	2,227	206	200	*
McDaniel College	2,940	174	482	*
Mount St. Mary's University	2,362	276	346	13
Notre Dame of Maryland University	2,277	197	517	*
St. John's College	542	33	10	*
Stevenson University	3,579	249	949	10
Washington Adventist University	1,078	182	486	*
Washington College	1,288	82	140	*
<b>Sub-Total</b>	<b>53,805</b>	<b>4,706</b>	<b>6,573</b>	<b>97</b>

Not Hispanic/Latino						Gender	
Native Hawaiian or Pacific Islander	Asian	White	Two or More Races	Foreign/ Non-Resident Alien	Unknown	Male	Female
*	*	2,155	76	19	20	814	1,770
18	569	6,990	640	203	871	5,099	7,556
*	78	289	99	457	90	1,527	3,382
*	88	2,582	70	*	79	1,275	1,840
*	34	1,817	138	34	26	880	1,497
*	37	1,498	58	36	97	752	1,432
18	234	3,392	405	44	101	2,455	3,896
44	1,099	6,748	724	1,111	193	6,675	11,057
*	284	3,838	331	54	*	2,649	3,480
*	*	500	18	*	*	336	315
*	85	2,669	199	43	80	1,335	2,513
*	174	3,909	204	64	74	2,428	3,277
13	1,084	2,859	564	505	372	3,804	5,306
55	2,482	4,674	710	2,185	91	9,797	11,463
14	520	431	398	452	240	4,377	7,411
*	66	1,772	131	19	57	1,028	1,862
192	6,849	46,123	4,765	5,243	2,396	45,231	68,057
10	96	176	243	229	184	2,351	3,820
*	*	50	75	244	43	621	2,103
*	110	2,723	211	418	78	2,394	2,784
10	304	5,997	224	106	309	3,614	5,003
16	1,459	11,954	1,162	473	633	8,751	13,958
14	226	1,597	167	136	228	1,786	2,690
*	1,064	3,394	239	304	131	1,840	4,987
18	2,638	5,319	642	1,172	340	7,399	6,203
27	6,230	18,546	1,596	5,029	1,666	21,062	19,681
*	*	379	142	113	557	1,235	1,651
393	2,998	21,064	2,519	983	5,750	30,875	27,406
*	79	221	266	540	96	3,233	4,530
*	64	1,063	84	15	34	614	899
498	15,340	72,483	7,570	9,762	10,049	85,775	95,715
*	33	305	28	41	59	570	170
*	83	1,126	50	34	326	651	1,517
*	72	1,264	87	105	41	728	1,324
30	3,876	11,016	1,052	5,596	1,036	12,578	14,501
*	193	4,007	152	59	28	2,100	3,373
*	208	803	95	617	94	585	1,642
*	68	1,751	*	*	455	1,050	1,890
13	73	1,454	101	54	32	1,225	1,137
*	125	1,087	76	29	10	301	1,976
*	21	347	20	101	240	293	249
*	130	1,955	167	*	95	1,197	2,382
*	37	50	21	127	171	349	729
*	49	882	*	61	67	519	769
63	4,968	26,047	1,850	6,847	2,654	22,146	31,659

**UNDERGRADUATE, GRADUATE, AND PROFESSIONAL ENROLLMENT  
BY RACE/ETHNICITY AND BY GENDER, Fall 2019 (continued)**

Institution	Total Enrollment	Hispanic/Latino, any race	Black/African American	American Indian or Alaska Native
<b>OTHER PRIVATE INSTITUTIONS</b>				
Bais HaMedrash and Mesivta of Baltimore	72	*	*	*
Faith Theological Seminary	114	*	65	*
Lincoln College of Technology	530	95	285	*
Maryland University of Integrative Health	891	19	164	*
Ner Israel Rabbinical College	443	*	*	*
Reid Temple Bible College	19	*	19	*
SANS Technology Institute	668	58	42	*
St. Mary's Seminary and University	161	*	53	*
Women's Institute of Torah Seminary	119	*	*	*
Yeshiva College of the Nation's Capital	18	*	*	*
<b>Sub-Total</b>	<b>3,035</b>	<b>177</b>	<b>628</b>	<b>13</b>
<b>TOTAL - ALL CAMPUSES</b>	<b>351,618</b>	<b>33,885</b>	<b>90,888</b>	<b>929</b>

**Source:**

Maryland Higher Education Commission, Enrollment Information System, 2019  
See Technical Notes for more information.

**REMEDIATION RATES OF RECENT MARYLAND PUBLIC HIGH SCHOOL GRADUATES  
ENROLLED AT MARYLAND PUBLIC INSTITUTIONS, 2018-2019**

Institution	Remediation Needed		Total # of Recent Public High School Graduates Enrolled
<b>COMMUNITY COLLEGES</b>			
Allegany College of Maryland	164	62.8%	261
Anne Arundel Community College	963	56.0%	1,719
Baltimore City Community College	630	93.6%	673
Carroll Community College	324	58.4%	555
Cecil College	110	64.7%	170
Chesapeake College	136	38.4%	354
College of Southern Maryland	455	35.2%	1,291
Community College of Baltimore County	1,517	70.2%	2,162
Frederick Community College	687	76.0%	904
Garrett College	64	46.0%	139
Hagerstown Community College	291	56.1%	519
Harford Community College	411	45.1%	912
Howard Community College	611	63.0%	970
Montgomery College	1,347	46.1%	2,920
Prince George's Community College	506	71.1%	712
Wor-Wic Community College	258	61.1%	422
<b>Sub-Total</b>	<b>8,474</b>	<b>57.7%</b>	<b>14,683</b>
<b>FOUR-YEAR PUBLIC INSTITUTIONS</b>			
Bowie State University	503	86.3%	583
Coppin State University	0	0.0%	238
Frostburg State University	191	30.4%	628
Salisbury University	0	0.0%	1,054
Towson University	249	12.1%	2,064
University of Baltimore	17	29.8%	57
University of Maryland, Baltimore County	168	10.7%	1,564
University of Maryland, College Park	78	2.1%	3,772
University of Maryland Eastern Shore	174	52.6%	331
Morgan State University	435	74.9%	581
St. Mary's College of Maryland	0	0.0%	324
<b>Sub-Total</b>	<b>1,815</b>	<b>16.2%</b>	<b>11,196</b>
<b>TOTAL</b>	<b>10,289</b>	<b>39.8%</b>	<b>25,879</b>

**Source:**

Maryland Higher Education Commission, Enrollment Information System  
See Technical Notes for more information.

Not Hispanic/Latino				Foreign/ Non-Resident		Gender	
Native Hawaiian or Pacific Islander	Asian	White	Two or More Races	Alien	Unknown	Male	Female
*	*	69	*	*	*	72	*
*	12	*	*	29	*	56	58
*	23	93	17	*	14	486	44
*	42	548	12	31	63	88	803
*	*	408	*	35	*	443	*
*	*	*	*	*	*	*	*
*	37	332	26	29	142	604	64
*	*	86	*	16	*	93	68
*	*	119	*	*	*	*	119
*	*	18	*	*	*	18	*
4	117	1,679	55	143	219	1,865	1,170
<b>757</b>	<b>27,274</b>	<b>146,332</b>	<b>14,240</b>	<b>21,995</b>	<b>15,318</b>	<b>155,017</b>	<b>196,601</b>

## REMEDIATION RATES OF RECENT MARYLAND PUBLIC HIGH SCHOOL GRADUATES ENROLLED AT MARYLAND PUBLIC INSTITUTIONS BY PLACE OF RESIDENCE, 2018-2019

	Remediation Needed	Total # of Recent Public High School Graduates Enrolled
Allegany County	116 39.7%	292
Anne Arundel County	1,020 41.0%	2,485
Baltimore County	1,595 46.9%	3,401
Calvert County	119 21.6%	551
Caroline County	26 21.3%	122
Carroll County	341 36.7%	929
Cecil County	110 43.0%	256
Charles County	288 35.5%	812
Dorchester County	25 26.9%	93
Frederick County	693 49.5%	1,401
Garrett County	26 24.5%	106
Harford County	446 33.9%	1,317
Howard County	546 27.9%	1,959
Kent County	14 36.8%	38
Montgomery County	1,488 28.0%	5,315
Prince George's County	1,339 52.5%	2,551
Queen Anne's County	59 24.0%	246
Saint Mary's County	127 24.0%	530
Somerset County	35 44.9%	78
Talbot County	50 35.0%	143
Washington County	300 45.9%	654
Wicomico County	179 41.2%	434
Worcester County	66 31.9%	207
Baltimore City	1053 63.6%	1,655
<b>TOTAL</b>	<b>10,061 39.3%</b>	<b>25,575</b>

**Source:**

Maryland Higher Education Commission, Enrollment Information System  
See Technical Notes for more information.

## PERCENTAGE PELL ENROLLMENT BY INSTITUTION, Fall 2018

<b>Institution</b>	<b>Total</b>
<b>COMMUNITY COLLEGES</b>	
Allegany College of Maryland	52.4%
Anne Arundel Community College	22.4%
Baltimore City Community College	47.7%
Carroll Community College	21.4%
Cecil College	30.6%
Chesapeake College	40.2%
College of Southern Maryland	21.7%
Community College of Baltimore County	37.9%
Frederick Community College	21.9%
Garrett College	54.1%
Hagerstown Community College	40.7%
Harford Community College	27.3%
Howard Community College	29.8%
Montgomery College	31.3%
Prince George's Community College	40.7%
Wor-Wic Community College	49.1%
<b>All Community Colleges</b>	<b>32.8%</b>
<b>FOUR-YEAR PUBLIC INSTITUTIONS</b>	
Bowie State University	51.4%
Coppin State University	58.4%
Frostburg State University	35.7%
Salisbury University	24.2%
Towson University	30.6%
University of Baltimore	42.5%
University of Maryland, Baltimore	27.4%
University of Maryland, Baltimore County	29.0%
University of Maryland, College Park	18.2%
University of Maryland Eastern Shore	52.2%
University of Maryland Global Campus	26.7%
Morgan State University	53.1%
St. Mary's College of Maryland	20.7%
<b>All Four-Year Public Institutions</b>	<b>29.0%</b>
<b>TOTAL - ALL PUBLIC CAMPUSES</b>	<b>30.6%</b>

### Sources:

Maryland Higher Education Commission, Enrollment Information System and Financial Aid Information System  
See Technical Notes for more information.







# retention & graduation

## RETENTION AND GRADUATION RATES AT FOUR-YEAR PUBLIC INSTITUTIONS IN MARYLAND

Institution	All Students		African American Students		Pell Grant Recipients (Year of Entry)	
	Retention	Graduation	Retention	Graduation	Retention	Graduation
Bowie State University	69.3%	46.7%	69.9%	48.4%	68.6%	41.6%
Coppin State University	69.7%	26.5%	69.0%	26.2%	71.3%	27.2%
Frostburg State University	73.3%	59.2%	71.2%	58.8%	73.4%	58.1%
Salisbury University	78.6%	75.0%	80.8%	69.4%	74.4%	69.4%
Towson University	86.0%	74.9%	89.6%	74.9%	86.8%	71.7%
University of Baltimore	81.6%	43.6%	82.5%	42.0%	88.9%	34.6%
University of Maryland, Baltimore County	82.2%	73.8%	88.2%	75.7%	87.9%	72.8%
University of Maryland, College Park	94.2%	87.4%	95.4%	80.8%	93.9%	83.0%
University of Maryland Eastern Shore	61.1%	47.7%	62.4%	47.3%	58.9%	48.3%
Morgan State University	70.0%	46.4%	70.3%	47.7%	70.2%	41.4%
St. Mary's College of Maryland	83.5%	80.9%	81.6%	77.1%	82.8%	79.3%
<b>STATEWIDE</b>	<b>83.7%</b>	<b>71.1%</b>	<b>76.8%</b>	<b>56.0%</b>	<b>78.6%</b>	<b>58.5%</b>

**Sources:**

Maryland Higher Education Commission, Degree Information System, Enrollment Information System, and Financial Aid Information System  
See Technical Notes for more information.

## COMMUNITY COLLEGE FOUR-YEAR GRADUATION AND TRANSFER RATES, ENTERING CLASS OF 2015

Institution	All Students		
	Graduated and Transferred	Graduated/ Did not Transfer	Transferred without Graduating
Allegany College of Maryland	7.4%	23.4%	4.2%
Anne Arundel Community College	16.3%	8.5%	13.6%
Baltimore City Community College	7.2%	11.1%	8.5%
Carroll Community College	21.3%	12.6%	10.0%
Cecil College	7.8%	16.6%	3.7%
Chesapeake College	14.5%	15.2%	9.9%
College of Southern Maryland	20.5%	12.8%	11.6%
Community College of Baltimore County	8.9%	8.0%	19.1%
Frederick Community College	21.8%	14.8%	11.0%
Garrett College	14.2%	17.0%	7.1%
Hagerstown Community College	14.0%	22.8%	7.0%
Harford Community College	23.3%	11.7%	14.2%
Howard Community College	19.4%	9.1%	15.8%
Montgomery College	15.0%	8.4%	13.7%
Prince George's Community College	11.6%	9.1%	14.5%
Wor-Wic Community College	10.4%	9.0%	17.1%
<b>STATEWIDE</b>	<b>15.3%</b>	<b>11.0%</b>	<b>13.4%</b>

### Sources:

Maryland Higher Education Commission, Enrollment Information System, Degree Information System, and Financial Aid Information System  
See Technical Notes for more information.

## NUMBER OF COMMUNITY COLLEGE STUDENTS TRANSFERRING TO FOUR-YEAR PUBLIC INSTITUTIONS IN FALL 2019

Institution	BSU	CSU	FSU	SU	TU
Allegany College of Maryland	4	0	131	2	13
Anne Arundel Community College	19	4	13	89	226
Baltimore City Community College	1	62	5	1	20
Carroll Community College	0	0	14	19	101
Cecil College	0	0	8	34	38
Chesapeake College	1	0	3	79	30
College of Southern Maryland	30	0	37	84	96
Community College of Baltimore County	19	44	48	46	633
Frederick Community College	2	0	38	64	163
Garrett College	1	1	53	6	1
Hagerstown Community College	0	1	57	30	37
Harford Community College	1	4	11	44	376
Howard Community College	13	8	13	31	207
Montgomery College	45	3	17	51	231
Prince George's Community College	189	13	9	16	97
Wor-Wic Community College	1	1	0	227	26
<b>TOTAL</b>	<b>326</b>	<b>141</b>	<b>457</b>	<b>823</b>	<b>2,295</b>

### Source:

Maryland Higher Education Commission, Enrollment Information System  
See Technical Notes for more information.

African American Students			Pell Grant Recipients (Year of Entry)		
Graduated and Transferred	Graduated/ Did not Transfer	Transferred without Graduating	Graduated and Transferred	Graduated/ Did not Transfer	Transferred without Graduating
1.0%	12.7%	7.3%	6.1%	19.7%	3.2%
9.0%	6.6%	10.9%	17.1%	8.5%	13.8%
5.1%	7.7%	8.8%	7.0%	8.4%	9.4%
10.5%	0.0%	10.5%	20.0%	6.2%	13.9%
4.4%	8.7%	4.4%	6.4%	12.7%	2.4%
2.2%	11.1%	2.2%	16.8%	8.8%	5.6%
15.5%	7.3%	12.0%	15.8%	9.7%	10.9%
5.3%	4.0%	19.2%	7.7%	5.7%	16.9%
13.7%	7.4%	8.4%	20.6%	15.4%	8.4%
1.4%	7.1%	12.9%	10.4%	14.1%	8.9%
8.5%	10.6%	8.5%	10.3%	20.0%	6.7%
10.9%	7.0%	10.9%	16.0%	10.3%	13.7%
13.1%	3.9%	17.3%	17.4%	5.9%	16.9%
11.2%	6.7%	19.5%	18.4%	7.7%	16.3%
9.6%	7.3%	17.4%	10.4%	4.9%	17.4%
4.5%	5.6%	10.1%	11.1%	8.0%	11.1%
<b>8.8%</b>	<b>6.3%</b>	<b>15.3%</b>	<b>13.3%</b>	<b>8.8%</b>	<b>13.4%</b>

UB	UMB	UMBC	UMCP	UMES	UMGC	MSU	SMCM	TOTAL
0	0	4	4	0	5	3	0	166
23	31	158	236	5	200	17	11	1,032
20	12	10	3	1	39	31	0	205
1	3	31	36	0	34	1	1	241
0	2	8	18	0	29	2	2	141
0	0	7	13	8	18	1	4	164
2	7	28	116	6	226	21	33	686
119	13	268	112	14	143	111	10	1,580
3	10	67	186	1	62	5	3	604
0	0	2	3	0	2	1	0	70
1	0	17	29	1	27	1	1	202
8	6	43	58	3	49	10	5	618
22	15	220	172	4	109	13	7	834
33	88	292	857	7	286	14	6	1,930
7	16	52	162	14	239	47	1	862
0	1	7	32	27	12	1	2	337
<b>239</b>	<b>204</b>	<b>1,214</b>	<b>2,037</b>	<b>91</b>	<b>1,480</b>	<b>279</b>	<b>86</b>	<b>9,672</b>

**DEGREE PROGRESS, FOUR YEARS AFTER INITIAL ENROLLMENT,  
MARYLAND COMMUNITY COLLEGES, ENTERING CLASS OF 2014**

Institution	Entering Class	Analysis Cohort	ALL STUDENTS	
			Graduation/ Transfer Rate	Successful Persister Rate
Allegany College of Maryland	626	523	60.2%	70.2%
Anne Arundel Community College	2,430	1,791	53.5%	74.6%
Baltimore City Community College	949	528	37.1%	51.1%
Carroll Community College	696	553	61.8%	74.9%
Cecil College	636	422	39.3%	62.8%
Chesapeake College	572	340	61.2%	78.8%
College of Southern Maryland	1,974	1,418	56.6%	71.4%
Community College of Baltimore County	4,557	2,705	42.0%	63.6%
Frederick Community College	1,345	851	67.5%	74.0%
Garrett College	271	207	77.8%	81.2%
Hagerstown Community College	903	596	56.5%	71.5%
Harford Community College	1,513	1,109	63.8%	80.6%
Howard Community College	1,668	1,235	54.8%	76.3%
Montgomery College	3,812	2,959	50.2%	75.5%
Prince George's Community College	2,347	1,595	36.2%	60.1%
Wor-Wic Community College	684	444	52.7%	67.1%
<b>STATEWIDE</b>	<b>24,983</b>	<b>17,276</b>	<b>51.4%</b>	<b>70.6%</b>

**Source:**

Institutional Performance Accountability Report submissions  
See Technical Notes for more information.



COLLEGE READY			DEVELOPMENTAL COMPLETERS			DEVELOPMENTAL NON-COMPLETERS		
Head Count	Graduation/ Transfer Rate	Successful Persister Rate	Head Count	Graduation/ Transfer Rate	Successful Persister Rate	Head Count	Graduation/ Transfer Rate	Successful Persister Rate
48	89.6%	93.8%	302	67.5%	82.1%	173	39.3%	42.8%
543	68.5%	86.0%	750	60.5%	87.2%	498	26.5%	43.2%
34	64.7%	73.5%	237	48.9%	74.3%	257	22.6%	26.8%
149	79.2%	89.3%	284	69.7%	85.6%	120	21.7%	31.7%
136	52.2%	91.2%	200	42.5%	63.5%	86	11.6%	16.3%
109	80.7%	89.9%	153	60.1%	86.3%	78	35.9%	48.7%
598	70.4%	81.9%	543	58.2%	78.6%	277	23.5%	34.7%
496	56.5%	71.4%	1,295	50.3%	82.3%	914	22.3%	32.9%
339	78.2%	79.9%	458	63.5%	74.5%	54	33.3%	33.3%
46	89.1%	91.3%	145	80.0%	84.1%	16	25.0%	25.0%
124	75.8%	84.7%	292	61.6%	82.2%	180	35.0%	45.0%
508	77.4%	90.6%	474	59.9%	83.8%	127	23.6%	29.1%
307	70.0%	84.4%	487	66.7%	91.8%	441	31.1%	53.5%
772	69.8%	87.0%	1,574	51.8%	83.2%	613	21.4%	40.9%
266	54.1%	73.3%	391	46.8%	89.8%	938	26.8%	44.0%
82	84.1%	90.2%	218	59.2%	79.4%	144	25.0%	35.4%
<b>4,557</b>	<b>69.7%</b>	<b>83.7%</b>	<b>7,803</b>	<b>56.9%</b>	<b>82.7%</b>	<b>4,916</b>	<b>25.7%</b>	<b>39.4%</b>



# degrees

## DEGREES BY MAJOR PROGRAM, 2019-2020

Major	Lower Division					Total
	Certificate	Associate	Bachelor's	Master's	Doctorate	
Agriculture	0	2	363	19	23	407
Architecture	0	0	164	61	4	229
Area Studies	0	0	136	12	11	159
Biological Science	0	10	2,274	848	265	3,397
Business	3	1	5,569	5,748	100	11,421
Communications	2	21	1,834	246	12	2,115
Computer Science	1	0	5,122	2,459	110	7,692
Education	0	1	2,009	3,004	190	5,204
Engineering	52	33	1,983	1,356	234	3,658
Fine Arts	11	31	1,277	436	48	1,803
Foreign Languages	0	0	218	16	14	248
Health	0	35	3,155	1,917	1,095	6,202
Home Economics	0	0	211	83	17	311
Law	0	7	126	84	353	570
Letters	0	0	969	168	32	1,169
Library Science	0	0	0	89	5	94
Mathematics	0	0	489	283	41	813
Physical Science	0	7	506	212	119	844
Psychology	0	6	2,230	466	61	2,763
Public Affairs	2	11	1,140	1,126	17	2,296
Social Science	5	86	3,990	1,464	104	5,649
Theology	0	0	58	84	24	166
Interdisciplinary	0	0	1,094	444	23	1,561
<b>Transfers</b>						
Biological & Physical Sciences	0	55	0	0	0	55
Humanities & Social Sciences	1	179	0	0	0	180
Engineering	0	303	0	0	0	303
Arts & Sciences	17	2,007	0	0	0	2,024
General Studies	506	6,575	0	0	0	7,081
Business Administration	0	1,208	0	0	0	1,208
Computer Science	1	392	0	0	0	393
Other/Interdisciplinary	0	7	0	0	0	7
Teacher Education, General	0	115	0	0	0	115
Special Education Assistant	0	3	0	0	0	3
Early Childhood Education (AAT)	0	83	0	0	0	83
Elementary Education/Generic Special Education (AAT)	0	133	0	0	0	133
Secondary Education - Mathematics (AAT)	0	2	0	0	0	2
Secondary Education - Spanish (AAT)	0	2	0	0	0	2
Secondary Education - English (AAT)	0	13	0	0	0	13
<b>Applied Majors</b>						
Business & Commerce Technology	625	855	28	0	0	1,508
Data Processing	534	897	6	0	0	1,437
Health Technology	733	2,462	1	0	0	3,196
Mechanical & Engineering Technology	449	326	0	34	0	809
Natural Science Technology	116	54	0	0	0	170
Public Service Technology	764	589	0	0	0	1,353
<b>TOTAL</b>	<b>3,822</b>	<b>16,511</b>	<b>34,952</b>	<b>20,659</b>	<b>2,902</b>	<b>78,846</b>

### Source:

Maryland Higher Education Commission, Degree Information System, 2020  
See Technical Notes for more information.

## DEGREES BY INSTITUTION, 2019-2020

Institution	Lower Division					Total
	Certificate	Associate	Bachelor's	Master's	Doctorate	
<b>COMMUNITY COLLEGES</b>						
Allegany College of Maryland	102	431	0	0	0	533
Anne Arundel Community College	691	1,749	0	0	0	2,440
Baltimore City Community College	160	384	0	0	0	544
Carroll Community College	56	492	0	0	0	548
Cecil College	66	398	0	0	0	464
Chesapeake College	49	243	0	0	0	292
College of Southern Maryland	630	926	0	0	0	1,556
Community College of Baltimore County	743	1,925	0	0	0	2,668
Frederick Community College	145	862	0	0	0	1,007
Garrett College	1	94	0	0	0	95
Hagerstown Community College	158	592	0	0	0	750
Harford Community College	52	812	0	0	0	864
Howard Community College	83	1,355	0	0	0	1,438
Montgomery College	224	2,798	0	0	0	3,022
Prince George's Community College	86	1,093	0	0	0	1,179
Wor-Wic Community College	194	318	0	0	0	512
<b>Sub-Total</b>	<b>3,440</b>	<b>14,472</b>	<b>0</b>	<b>0</b>	<b>0</b>	<b>17,912</b>
<b>FOUR-YEAR PUBLIC INSTITUTIONS</b>						
Bowie State University	0	0	870	293	14	1,177
Coppin State University	0	0	335	75	1	411
Frostburg State University	0	0	967	213	11	1,191
Salisbury University	0	0	1,907	324	15	2,246
Towson University	0	0	4,701	829	28	5,558
University of Baltimore	0	0	521	555	170	1,246
University of Maryland, Baltimore	0	0	420	918	874	2,212
University of Maryland, Baltimore County	0	0	2,632	624	87	3,343
University of Maryland, College Park	19	0	8,295	2,721	632	11,667
University of Maryland Eastern Shore	0	0	516	49	99	664
University of Maryland Global Campus	0	1,998	6,663	4,241	56	12,958
Morgan State University	0	0	1,102	285	78	1,465
St. Mary's College of Maryland	0	0	336	21	0	357
<b>Sub-Total</b>	<b>19</b>	<b>1,998</b>	<b>29,265</b>	<b>11,148</b>	<b>2,065</b>	<b>44,495</b>



## DEGREES BY INSTITUTION, 2019-2020 (continued)

Institution	Lower Division					Total
	Certificate	Associate	Bachelor's	Master's	Doctorate	
<b>STATE-AIDED INDEPENDENT INSTITUTIONS</b>						
Capitol Technology University	1	1	94	39	41	176
Goucher College	0	0	305	155	0	460
Hood College	0	0	222	221	11	454
Johns Hopkins University	0	0	1,405	6,806	660	8,871
Loyola University Maryland	0	0	917	720	22	1,659
Maryland Institute College of Art	0	0	359	260	0	619
McDaniel College	0	0	319	232	0	551
Mount St. Mary's University	0	0	372	190	0	562
Notre Dame of Maryland University	0	0	163	336	56	555
St. John's College	0	0	124	27	0	151
Stevenson University	0	0	800	250	0	1,050
Washington Adventist University	0	10	167	72	0	249
Washington College	0	0	318	0	0	318
<b>Sub-Total</b>	<b>1</b>	<b>11</b>	<b>5,565</b>	<b>9,308</b>	<b>790</b>	<b>15,675</b>
<b>OTHER PRIVATE INSTITUTIONS</b>						
Bais HaMedrash and Mesivta of Baltimore	0	0	19	0	0	19
Faith Theological Seminary	0	0	6	15	15	36
Lincoln College of Technology	362	30	0	0	0	392
Maryland University of Integrative Health	0	0	0	133	23	156
Ner Israel Rabbinical College	0	0	47	19	9	75
SANS Technology Institute	0	0	0	16	0	16
St. Mary's Seminary and University	0	0	1	20	0	21
Women's Institute of Torah Seminary	0	0	41	0	0	41
Yeshiva College of Nation's Capital	0	0	8	0	0	8
<b>Sub-Total</b>	<b>362</b>	<b>30</b>	<b>122</b>	<b>203</b>	<b>47</b>	<b>764</b>
<b>TOTAL- ALL CAMPUSES</b>	<b>3,822</b>	<b>16,511</b>	<b>34,952</b>	<b>20,659</b>	<b>2,902</b>	<b>78,846</b>

**Source:**

Maryland Higher Education Commission, Degree Information System, 2020  
See Technical Notes for more information.

## DEGREES BY RACE/ETHNICITY AND BY GENDER, 2019-2020

	Lower Division		Associate		Sub-Total	
	Certificate	Associate	Certificate	Associate	Certificate	Associate
Hispanic/Latino, any race	306	8.0%	1,995	12.1%	2,301	11.3%
Not Hispanic/Latino:						
Black/African American	1,114	29.1%	3,733	22.6%	4,847	23.8%
American Indian or Alaska Native	12	0.3%	66	0.4%	78	0.4%
Native Hawaiian or Pacific Islander	3	0.1%	42	0.3%	45	0.2%
Asian	164	4.3%	1,082	6.6%	1,246	6.1%
White	1,848	48.4%	7,747	46.9%	9,595	47.2%
Two or More Races	125	3.3%	583	3.5%	708	3.5%
Foreign/Non-Resident Alien	145	3.8%	826	5.0%	971	4.8%
Unknown	105	2.7%	437	2.6%	542	2.7%
<b>TOTAL</b>	<b>3,822</b>	<b>100.0%</b>	<b>16,511</b>	<b>100.0%</b>	<b>20,333</b>	<b>100.0%</b>
Men	1,930	50.5%	6,856	41.5%	8,786	43.2%
Women	1,892	49.5%	9,655	58.5%	11,547	56.8%
<b>TOTAL</b>	<b>3,822</b>	<b>100.0%</b>	<b>16,511</b>	<b>100.0%</b>	<b>20,333</b>	<b>100.0%</b>

**Source:**

Maryland Higher Education Commission, Degree Information System, 2020  
See Technical Notes for more information.





Bachelor's		Master's		Doctorate		Sub-Total		TOTAL	
3,007	8.6%	1,187	5.7%	142	4.9%	4,336	7.4%	6,637	8.4%
7,679	22.0%	3,824	18.5%	398	13.7%	11,901	20.3%	16,748	21.2%
78	0.2%	37	0.2%	3	0.1%	118	0.2%	196	0.2%
62	0.2%	19	0.1%	0	0.0%	81	0.1%	126	0.2%
3,435	9.8%	1,504	7.3%	371	12.8%	5,310	9.1%	6,556	8.3%
16,660	47.7%	8,285	40.1%	1,334	46.0%	26,279	44.9%	35,874	45.5%
1,390	4.0%	579	2.8%	89	3.1%	2,058	3.5%	2,766	3.5%
1,432	4.1%	3,956	19.1%	473	16.3%	5,861	10.0%	6,832	8.7%
1,209	3.5%	1,268	6.1%	92	3.2%	2,569	4.4%	3,111	3.9%
<b>34,952</b>	<b>100.0%</b>	<b>20,659</b>	<b>100.0%</b>	<b>2,902</b>	<b>100.0%</b>	<b>58,513</b>	<b>100.0%</b>	<b>78,846</b>	<b>100.0%</b>
15,802	45.2%	8,440	40.9%	1,333	45.9%	25,575	43.7%	34,361	43.6%
19,150	54.8%	12,219	59.1%	1,569	54.1%	32,938	56.3%	44,485	56.4%
<b>34,952</b>	<b>100.0%</b>	<b>20,659</b>	<b>100.0%</b>	<b>2,902</b>	<b>100.0%</b>	<b>58,513</b>	<b>100.0%</b>	<b>78,846</b>	<b>100.0%</b>

# faculty & staff

## FULL-TIME AND PART-TIME FACULTY, Fall 2019

Institution	Full-Time		Part-Time		Total
<b>COMMUNITY COLLEGES</b>					
Allegany College of Maryland	95	55.2%	77	44.8%	172
Anne Arundel Community College	264	33.8%	518	66.2%	782
Baltimore City Community College	106	40.9%	153	59.1%	259
Carroll Community College	77	35.0%	143	65.0%	220
Cecil College	54	26.2%	152	73.8%	206
Chesapeake College	54	51.4%	51	48.6%	105
College of Southern Maryland	120	29.8%	283	70.2%	403
Community College of Baltimore County	410	39.2%	637	60.8%	1,047
Frederick Community College	102	26.3%	286	73.7%	388
Garrett College	21	42.9%	28	57.1%	49
Hagerstown Community College	78	35.5%	142	64.5%	220
Harford Community College	103	31.8%	221	68.2%	324
Howard Community College	201	27.7%	525	72.3%	726
Montgomery College	467	35.3%	856	64.7%	1,323
Prince George's Community College	232	34.1%	449	65.9%	681
Wor-Wic Community College	71	47.0%	80	53.0%	151
<b>Sub-Total</b>	<b>2,455</b>	<b>34.8%</b>	<b>4,601</b>	<b>65.2%</b>	<b>7,056</b>
<b>FOUR-YEAR PUBLIC INSTITUTIONS</b>					
Bowie State University	221	43.3%	289	56.7%	510
Coppin State University	123	50.0%	123	50.0%	246
Frostburg State University	238	66.7%	119	33.3%	357
Salisbury University	446	66.6%	224	33.4%	670
Towson University	930	52.7%	834	47.3%	1,764
University of Baltimore	183	51.5%	172	48.5%	355
University of Maryland, Baltimore	442	38.7%	699	61.3%	1,141
University of Maryland, Baltimore County	559	59.7%	377	40.3%	936
University of Maryland, College Park	1,870	71.8%	736	28.2%	2,606
University of Maryland Eastern Shore	205	69.5%	90	30.5%	295
University of Maryland Global Campus	215	5.7%	3,530	94.3%	3,745
Morgan State University	467	67.7%	223	32.3%	690
St. Mary's College of Maryland	134	73.2%	49	26.8%	183
<b>Sub-Total</b>	<b>6,033</b>	<b>44.7%</b>	<b>7,465</b>	<b>55.3%</b>	<b>13,498</b>
<b>TOTAL - ALL CAMPUSES</b>	<b>8,488</b>	<b>41.3%</b>	<b>12,066</b>	<b>58.7%</b>	<b>20,554</b>

**Source:**

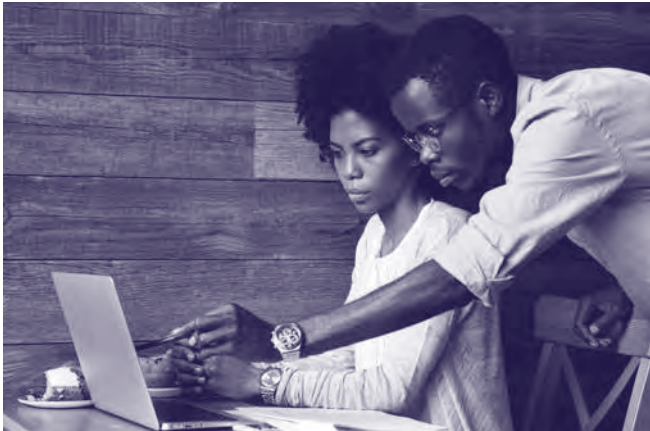
Maryland Higher Education Commission, Employee Data System, 2019  
See Technical Notes for more information.

## AVERAGE SALARY OF FULL-TIME FACULTY, Fall 2019

Institution	Associate		Assistant	Instructor	Lecturer	CAMPUS AVERAGE
	Professor	Professor	Professor			
<b>COMMUNITY COLLEGES</b>						
Allegany College of Maryland	\$68,834	\$58,677	\$53,402	\$48,675	-	\$58,111
Anne Arundel Community College	90,671	78,391	68,118	60,682	-	77,445
Baltimore City Community College	83,069	70,978	62,252	-	-	69,942
Carroll Community College	78,094	70,470	56,142	48,416	56,740	62,214
Cecil College	83,702	66,154	60,684	43,650	-	68,616
Chesapeake College	84,311	76,841	70,585	59,868	-	71,794
College of Southern Maryland	93,391	74,440	68,806	63,820	-	84,469
Community College of Baltimore County	104,031	88,584	74,539	63,316	-	82,193
Frederick Community College	87,668	71,675	63,551	-	-	73,286
Garrett College	71,250	59,249	59,522	-	-	65,600
Hagerstown Community College	81,758	65,300	61,845	55,137	-	64,653
Harford Community College	82,604	66,984	58,968	-	-	63,963
Howard Community College	94,502	79,237	71,153	64,966	-	81,494
Montgomery College	95,673	78,782	73,840	70,308	-	91,251
Prince George's Community College	89,431	75,880	69,227	53,850	-	80,123
Wor-Wic Community College	81,320	71,653	60,874	58,178	-	66,401
<b>Community College Average</b>	<b>\$92,067</b>	<b>\$77,151</b>	<b>\$66,741</b>	<b>\$58,926</b>	<b>\$56,740</b>	<b>\$78,362</b>
<b>FOUR-YEAR PUBLIC INSTITUTIONS</b>						
Bowie State University	\$105,269	\$83,661	\$74,486	\$74,041	\$57,298	\$79,874
Coppin State University	101,214	81,885	78,006	55,287	-	82,251
Frostburg State University	93,297	76,480	73,333	48,852	48,023	75,854
Salisbury University	101,343	82,172	76,006	75,123	56,203	79,726
Towson University	100,376	86,641	72,880	68,307	47,396	76,630
University of Baltimore	155,005	118,666	87,203	-	82,722	111,285
University of Maryland, Baltimore	189,585	135,497	112,964	97,624	119,164	134,994
University of Maryland, Baltimore County	140,827	98,942	84,691	71,254	66,102	100,765
University of Maryland, College Park	190,679	121,037	107,971	88,004	65,347	140,430
University of Maryland Eastern Shore	103,984	91,222	86,318	118,450	62,196	87,338
University of Maryland Global Campus	100,214	80,472	74,459	-	-	92,193
Morgan State University	139,093	97,792	83,277	80,440	53,033	88,818
St. Mary's College of Maryland	95,695	77,651	63,777	61,715	30,722	78,683
<b>Four-Year Public Average</b>	<b>\$148,063</b>	<b>\$101,514</b>	<b>\$88,558</b>	<b>\$84,128</b>	<b>\$58,668</b>	<b>\$105,419</b>

**Source:**

Maryland Higher Education Commission, Employee Data System, 2019  
See Technical Notes for more information.



## FULL-TIME FACULTY BY RACE/ETHNICITY AND BY GENDER, Fall 2019

Institution	Hispanic/Latino, any race	Black/ African American	American Indian or Alaska Native
<b>COMMUNITY COLLEGES</b>			
Allegany College of Maryland	1	0	0
Anne Arundel Community College	5	33	1
Baltimore City Community College	0	69	0
Carroll Community College	1	4	0
Cecil College	3	5	0
Chesapeake College	1	2	0
College of Southern Maryland	6	16	0
Community College of Baltimore County	13	71	0
Frederick Community College	1	11	0
Garrett College	0	0	0
Hagerstown Community College	1	4	0
Harford Community College	3	8	0
Howard Community College	5	33	0
Montgomery College	23	77	5
Prince George's Community College	4	94	0
Wor-Wic Community College	1	2	0
<b>Sub-Total</b>	<b>68</b>	<b>429</b>	<b>6</b>
<b>FOUR-YEAR PUBLIC INSTITUTIONS</b>			
Bowie State University	12	144	0
Coppin State University	2	84	0
Frostburg State University	3	10	0
Salisbury University	11	24	0
Towson University	24	65	0
University of Baltimore	7	19	0
University of Maryland, Baltimore	15	60	3
University of Maryland, Baltimore County	29	38	0
University of Maryland, College Park	108	116	5
University of Maryland Eastern Shore	6	74	0
University of Maryland Global Campus	3	16	1
Morgan State University	5	203	3
St. Mary's College of Maryland	4	6	1
<b>Sub-Total</b>	<b>229</b>	<b>859</b>	<b>13</b>
<b>TOTAL - ALL CAMPUSES</b>	<b>297</b>	<b>1,288</b>	<b>19</b>

**Source:**

Maryland Higher Education Commission, Employee Data System, 2019  
See Technical Notes for more information.



Not Hispanic/Latino						Gender	
Native Hawaiian or Pacific Islander	Asian	White	Two or More Races	Foreign/ Non-Resident		Male	Female
				Alien	Unknown		
0	1	92	0	1	0	36	59
0	17	204	0	0	4	98	166
0	5	22	0	10	0	47	59
0	3	68	0	0	1	21	56
0	1	45	0	0	0	22	32
0	2	48	0	0	1	15	39
0	6	87	2	0	3	46	74
0	18	291	6	5	6	165	245
0	5	82	0	0	3	41	61
0	1	19	0	0	1	12	9
0	1	71	0	0	1	29	49
0	1	91	0	0	0	39	64
0	18	141	1	2	1	76	125
0	31	283	2	46	0	187	280
0	14	105	2	3	10	88	144
0	3	65	0	0	0	24	47
0	127	1,714	13	67	31	946	1,509
0	15	31	1	3	15	99	122
0	10	18	1	8	0	53	70
0	23	193	1	8	0	134	104
0	40	359	1	8	3	216	230
2	128	672	9	4	26	390	540
0	23	126	0	5	3	97	86
1	52	298	1	12	0	148	294
0	85	374	5	28	0	289	270
2	249	1,167	16	60	147	1,128	742
2	38	73	4	7	1	113	92
0	18	119	5	18	35	120	95
1	25	69	8	90	63	257	210
0	6	112	1	4	0	67	67
8	712	3,611	53	255	293	3,111	2,922
<b>8</b>	<b>839</b>	<b>5,325</b>	<b>66</b>	<b>322</b>	<b>324</b>	<b>4,057</b>	<b>4,431</b>



## FULL-TIME AND PART-TIME STAFF, Fall 2019

Institution	Full-Time		Part-Time		Total
<b>COMMUNITY COLLEGES</b>					
Allegany College of Maryland	185	63.6%	106	36.4%	291
Anne Arundel Community College	623	95.0%	33	5.0%	656
Baltimore City Community College	260	66.0%	134	34.0%	394
Carroll Community College	197	68.9%	89	31.1%	286
Cecil College	138	49.8%	139	50.2%	277
Chesapeake College	167	67.6%	80	32.4%	247
College of Southern Maryland	331	48.4%	353	51.6%	684
Community College of Baltimore County	866	58.7%	609	41.3%	1,475
Frederick Community College	310	54.9%	255	45.1%	565
Garrett College	104	64.6%	57	35.4%	161
Hagerstown Community College	205	80.1%	51	19.9%	256
Harford Community College	247	45.3%	298	54.7%	545
Howard Community College	455	93.2%	33	6.8%	488
Montgomery College	1,338	96.3%	52	3.7%	1,390
Prince George's Community College	552	67.1%	271	32.9%	823
Wor-Wic Community College	172	81.9%	38	18.1%	210
<b>Sub-Total</b>	<b>6,150</b>	<b>70.3%</b>	<b>2,598</b>	<b>29.7%</b>	<b>8,748</b>
<b>FOUR-YEAR PUBLIC INSTITUTIONS</b>					
Bowie State University	424	88.7%	54	11.3%	478
Coppin State University	304	85.4%	52	14.6%	356
Frostburg State University	472	75.5%	153	24.5%	625
Salisbury University	708	61.0%	453	39.0%	1,161
Towson University	1,454	81.4%	332	18.6%	1,786
University of Baltimore	419	78.8%	113	21.2%	532
University of Maryland, Baltimore	1,933	86.5%	302	13.5%	2,235
University of Maryland, Baltimore County	1,263	97.0%	39	3.0%	1,302
University of Maryland, College Park	5,669	97.0%	177	3.0%	5,846
University of Maryland Eastern Shore	455	98.5%	7	1.5%	462
University of Maryland Global Campus	1,318	81.4%	302	18.6%	1,620
Morgan State University	1,012	70.6%	422	29.4%	1,434
St. Mary's College of Maryland	251	82.6%	53	17.4%	304
<b>Sub-Total</b>	<b>15,682</b>	<b>86.4%</b>	<b>2,459</b>	<b>13.6%</b>	<b>18,141</b>
<b>TOTAL - ALL CAMPUSES</b>	<b>21,832</b>	<b>81.2%</b>	<b>5,057</b>	<b>18.8%</b>	<b>26,889</b>

**Source:**

Maryland Higher Education Commission, Employee Data System, 2019  
See Technical Notes for more information.





## FULL-TIME STAFF BY RACE/ETHNICITY AND BY GENDER, Fall 2019

Institution	Hispanic/Latino, any race	Black/ African American	American Indian or Alaska Native
<b>COMMUNITY COLLEGES</b>			
Allegany College of Maryland	1	2	0
Anne Arundel Community College	29	113	1
Baltimore City Community College	6	196	3
Carroll Community College	6	3	0
Cecil College	4	12	0
Chesapeake College	2	26	0
College of Southern Maryland	8	93	1
Community College of Baltimore County	13	259	3
Frederick Community College	16	39	0
Garrett College	0	2	0
Hagerstown Community College	6	11	1
Harford Community College	6	28	0
Howard Community College	20	109	1
Montgomery College	123	411	5
Prince George's Community College	18	351	4
Wor-Wic Community College	2	27	0
<b>Sub-Total</b>	<b>260</b>	<b>1,682</b>	<b>19</b>
<b>FOUR-YEAR PUBLIC INSTITUTIONS</b>			
Bowie State University	5	327	0
Coppin State University	5	258	1
Frostburg State University	2	19	0
Salisbury University	19	133	1
Towson University	32	296	4
University of Baltimore	15	159	0
University of Maryland, Baltimore	40	810	2
University of Maryland, Baltimore County	41	283	1
University of Maryland, College Park	590	1,372	9
University of Maryland Eastern Shore	10	329	2
University of Maryland Global Campus	58	331	3
Morgan State University	20	751	4
St. Mary's College of Maryland	8	52	0
<b>Sub-Total</b>	<b>845</b>	<b>5,120</b>	<b>27</b>
<b>TOTAL - ALL CAMPUSES</b>	<b>1,105</b>	<b>6,802</b>	<b>46</b>

**Source:**

Maryland Higher Education Commission, Employee Data System, 2019  
See Technical Notes for more information.





Not Hispanic/Latino						Gender	
Native Hawaiian or Pacific Islander	Asian	White	Two or More Races	Foreign/ Non-Resident		Male	Female
				Alien	Unknown		
0	0	182	0	0	0	69	116
1	13	457	0	4	5	233	390
0	4	47	0	4	0	94	166
0	2	180	5	0	1	56	141
0	1	121	0	0	0	50	88
0	2	135	1	1	0	53	114
0	7	206	10	3	3	115	216
0	22	533	18	12	6	299	567
0	8	243	0	0	4	105	205
0	1	90	0	0	11	54	50
0	1	184	1	0	1	85	120
0	4	203	6	0	0	81	166
0	43	267	8	6	1	153	302
2	148	536	15	97	1	593	745
0	18	78	20	11	52	213	339
0	1	137	5	0	0	52	120
3	275	3,599	89	138	85	2,305	3,845
0	7	34	3	19	29	159	265
0	12	20	1	7	0	125	179
0	3	447	1	0	0	218	254
0	8	532	10	3	2	313	395
1	41	1,040	18	2	20	656	798
0	15	214	9	1	6	171	248
2	117	923	26	12	1	719	1,214
2	50	861	19	5	1	507	756
5	434	2,612	101	72	474	2,482	3,187
0	4	98	3	3	6	217	238
4	62	373	27	112	348	413	905
2	19	60	20	49	87	461	551
0	6	180	1	4	0	107	144
16	778	7,394	239	289	974	6,548	9,134
<b>19</b>	<b>1,053</b>	<b>10,993</b>	<b>328</b>	<b>427</b>	<b>1,059</b>	<b>8,853</b>	<b>12,979</b>



# revenues & expenditures

## COMMUNITY COLLEGES: UNRESTRICTED REVENUES, FY 2020

Institution	State		Local	
Allegany College of Maryland	\$6,423,523	22.9%	\$7,706,856	27.5%
Anne Arundel Community College	29,842,430	26.1%	47,087,700	41.1%
Baltimore City Community College	41,004,259	71.3%	599,999	1.0%
Carroll Community College	8,559,167	28.2%	10,607,100	34.9%
Cecil College	6,274,983	23.7%	11,513,157	43.5%
Chesapeake College	7,016,493	32.8%	6,532,536	30.5%
College of Southern Maryland	14,386,506	24.0%	19,794,342	33.0%
Community College of Baltimore County	42,451,319	25.2%	54,733,759	32.5%
Frederick Community College	11,154,005	23.0%	18,441,502	38.0%
Garrett College	4,083,287	31.5%	4,834,000	37.3%
Hagerstown Community College	9,455,511	27.3%	10,035,290	28.9%
Harford Community College	12,092,899	23.4%	17,147,844	33.2%
Howard Community College	19,809,410	20.2%	35,843,000	36.5%
Montgomery College	45,255,119	16.0%	147,164,017	52.1%
Prince George's Community College	31,245,262	26.6%	43,922,330	37.3%
Wor-Wic Community College	8,837,428	33.1%	7,978,754	29.9%
<b>TOTAL</b>	<b>\$297,891,601</b>	<b>25.3%</b>	<b>\$443,942,186</b>	<b>37.6%</b>

### Source:

Maryland Higher Education Commission, CC-4 Financial Reports  
See Technical Notes for more information.

## COMMUNITY COLLEGES: UNRESTRICTED EXPENDITURES, FY 2020

Institution	Instruction		Public Service		Academic Support	
Allegany College of Maryland	\$9,569,389	34.5%	\$8,768	0.0%	\$5,249,875	18.9%
Anne Arundel Community College	56,341,621	49.1%	-	0.0%	18,330,579	16.0%
Baltimore City Community College	20,934,774	41.6%	-	0.0%	6,768,687	13.4%
Carroll Community College	13,904,963	44.8%	-	0.0%	3,890,559	12.5%
Cecil College	10,276,873	39.8%	-	0.0%	3,310,866	12.8%
Chesapeake College	9,900,307	48.4%	102,942	0.5%	1,554,984	7.6%
College of Southern Maryland	23,410,905	41.5%	210,998	0.4%	7,331,751	13.0%
Community College of Baltimore County	83,055,939	45.2%	-	0.0%	12,216,954	6.6%
Frederick Community College	22,383,730	48.9%	-	0.0%	1,133,425	2.5%
Garrett College	3,640,399	29.5%	475,816	3.9%	797,729	6.5%
Hagerstown Community College	12,644,847	40.3%	-	0.0%	2,927,067	9.3%
Harford Community College	17,183,563	36.6%	-	0.0%	6,282,396	13.4%
Howard Community College	44,611,914	46.0%	839,296	0.9%	11,902,424	12.3%
Montgomery College	93,840,450	33.1%	-	0.0%	48,300,990	17.0%
Prince George's Community College	34,586,527	31.9%	521,134	0.5%	24,304,646	22.4%
Wor-Wic Community College	9,463,218	36.6%	-	0.0%	5,025,372	19.4%
<b>TOTAL</b>	<b>\$465,749,419</b>	<b>40.1%</b>	<b>\$2,158,954</b>	<b>0.2%</b>	<b>\$159,328,304</b>	<b>13.7%</b>

### Source:

Maryland Higher Education Commission, CC-4 Financial Reports  
See Technical Notes for more information.

Tuition and Fees		Other		Total	FTE Enrollment
\$13,004,466	46.3%	\$930,768	3.3%	\$28,065,613	2,189
36,936,551	32.3%	647,385	0.6%	114,514,066	9,752
13,262,452	23.1%	2,619,463	4.6%	57,486,173	3,937
11,079,164	36.5%	142,857	0.5%	30,388,288	2,361
8,440,751	31.9%	243,067	0.9%	26,471,958	1,788
6,925,450	32.4%	927,329	4.3%	21,401,808	1,713
24,780,467	41.3%	1,019,345	1.7%	59,980,660	4,660
69,100,475	41.0%	2,161,429	1.3%	168,446,982	14,621
17,427,126	35.9%	1,520,213	3.1%	48,542,846	4,116
3,571,212	27.5%	479,913	3.7%	12,968,412	674
14,625,297	42.2%	575,341	1.7%	34,691,439	3,282
20,919,205	40.6%	1,420,516	2.8%	51,580,464	4,118
40,220,902	41.0%	2,243,391	2.3%	98,116,703	7,565
85,572,983	30.3%	4,454,610	1.6%	282,446,729	17,588
40,313,598	34.3%	2,152,355	1.8%	117,633,545	11,343
9,333,021	35.0%	510,610	1.9%	26,659,813	2,249
<b>\$415,513,120</b>	<b>35.2%</b>	<b>\$22,048,592</b>	<b>1.9%</b>	<b>\$1,179,395,499</b>	<b>91,956</b>

Student Services		Institutional Support		Operation & Maintenance		Scholarships & Fellowships		Total
\$2,233,067	8.1%	\$6,065,764	21.9%	\$3,137,575	11.3%	\$1,453,834	5.2%	\$27,718,272
11,530,861	10.0%	17,110,514	14.9%	11,547,021	10.1%	-	0.0%	114,860,596
5,048,469	10.0%	10,298,209	20.4%	7,281,825	14.5%	28,168	0.1%	50,360,132
3,203,895	10.3%	6,713,560	21.6%	3,343,401	10.8%	-	0.0%	31,056,378
3,395,057	13.2%	5,399,518	20.9%	2,849,973	11.0%	568,689	2.2%	25,800,976
1,946,683	9.5%	4,808,706	23.5%	2,067,273	10.1%	84,194	0.4%	20,465,089
5,908,429	10.5%	16,902,633	29.9%	2,430,376	4.3%	271,882	0.5%	56,466,974
17,479,564	9.5%	53,521,729	29.1%	16,321,391	8.9%	1,161,395	0.6%	183,756,972
7,352,097	16.1%	8,867,530	19.4%	5,789,100	12.7%	232,340	0.5%	45,758,222
2,232,179	18.1%	3,031,902	24.6%	2,012,920	16.3%	141,532	1.1%	12,332,477
3,921,560	12.5%	8,614,481	27.4%	3,298,002	10.5%	-	0.0%	31,405,957
5,972,543	12.7%	11,773,704	25.1%	4,717,822	10.0%	1,045,743	2.2%	46,975,771
8,530,104	8.8%	14,582,909	15.1%	13,234,274	13.7%	3,181,793	3.3%	96,882,714
35,928,254	12.7%	50,956,553	18.0%	46,882,023	16.5%	7,669,685	2.7%	283,577,955
8,382,984	7.7%	25,714,664	23.7%	12,258,920	11.3%	2,816,164	2.6%	108,585,039
2,120,456	8.2%	5,640,289	21.8%	3,432,084	13.3%	159,122	0.6%	25,840,541
<b>\$125,186,202</b>	<b>10.8%</b>	<b>\$250,002,665</b>	<b>21.5%</b>	<b>\$140,603,980</b>	<b>12.1%</b>	<b>\$18,814,541</b>	<b>1.6%</b>	<b>\$1,161,844,065</b>

## FOUR-YEAR PUBLIC COLLEGES AND UNIVERSITIES: UNRESTRICTED REVENUES, FY 2020

Institution	State		Federal	
Bowie State University	\$48,077,890	50.9%	\$455,147	0.5%
Coppin State University	48,812,311	78.2%	141,226	0.2%
Frostburg State University	44,610,144	51.1%	-	0.0%
Salisbury University	58,280,356	43.4%	-	0.0%
Towson University	131,859,194	39.9%	890,437	0.3%
University of Baltimore	40,742,183	41.2%	786,814	0.8%
University of Maryland, Baltimore	252,312,068	40.3%	71,221,436	11.4%
University of Maryland, Baltimore County	146,608,173	45.0%	8,307,099	2.5%
University of Maryland, College Park	567,662,254	38.5%	74,262,619	5.0%
University of Maryland Eastern Shore	45,885,966	59.7%	975,683	1.3%
University of Maryland Global Campus	44,322,848	10.6%	12,869	0.0%
Morgan State University	102,341,753	58.9%	2,714,680	1.6%
St. Mary's College of Maryland	27,157,749	55.0%	750	0.0%
<b>TOTAL</b>	<b>\$1,558,672,889</b>	<b>39.5%</b>	<b>\$159,768,760</b>	<b>4.0%</b>

**Source:**

FY 2022 institutional budget requests  
See Technical Notes for more information.

## FOUR-YEAR PUBLIC COLLEGES AND UNIVERSITIES: UNRESTRICTED EXPENDITURES, FY 2020

Institution	Instruction		Research		Public Service	
Bowie State University	\$34,605,814	35.7%	-	0.0%	\$143,821	0.1%
Coppin State University	17,851,534	29.1%	-	0.0%	-	0.0%
Frostburg State University	32,335,111	38.4%	-	0.0%	389,724	0.5%
Salisbury University	61,062,153	41.1%	649,721	0.4%	3,145,811	2.1%
Towson University	132,766,783	39.6%	1,255,890	0.4%	2,733,669	0.8%
University of Baltimore	35,955,013	36.4%	686,292	0.7%	-	0.0%
University of Maryland, Baltimore	178,554,451	28.0%	98,856,068	15.5%	76,391,456	12.0%
University of Maryland, Baltimore County	129,292,222	40.3%	20,401,277	6.4%	4,166,297	1.3%
University of Maryland, College Park	544,269,161	37.4%	141,389,203	9.7%	33,730,655	2.3%
University of Maryland Eastern Shore	31,280,027	42.5%	1,903,331	2.6%	660,132	0.9%
University of Maryland Global Campus	105,522,333	25.2%	-	0.0%	12,339,886	3.0%
Morgan State University	55,177,890	32.6%	3,479,129	2.1%	360,337	0.2%
St. Mary's College of Maryland	18,790,432	34.5%	321	0.0%	56,244	0.1%
<b>TOTAL</b>	<b>\$1,377,462,924</b>	<b>34.8%</b>	<b>\$268,621,232</b>	<b>6.8%</b>	<b>\$134,118,032</b>	<b>3.4%</b>

**Source:**

FY 2022 institutional budget requests  
See Technical Notes for more information.



Tuition and Fees		Other		Total	FTE Enrollment
\$46,290,733	49.0%	(\$405,084)	-0.4%	\$94,418,686	5,084
15,206,986	24.4%	(1,726,519)	-2.8%	62,434,004	2,125
37,091,441	42.5%	5,647,625	6.5%	87,349,210	4,012
79,334,342	59.0%	(3,216,073)	-2.4%	134,398,625	7,710
196,516,164	59.5%	1,069,531	0.3%	330,335,326	18,732
55,009,041	55.7%	2,294,091	2.3%	98,832,129	2,931
162,219,794	25.9%	139,760,216	22.3%	625,513,514	6,859
138,851,463	42.6%	32,030,448	9.8%	325,797,183	11,068
661,680,357	44.9%	169,506,975	11.5%	1,473,112,205	33,776
24,212,080	31.5%	5,828,441	7.6%	76,902,170	2,668
356,205,595	85.2%	17,416,774	4.2%	417,958,086	35,213
66,369,473	38.2%	2,344,233	1.3%	173,770,139	7,093
22,568,407	45.7%	(351,400)	-0.7%	49,375,506	1,539
<b>\$1,861,555,876</b>	<b>47.1%</b>	<b>\$370,199,258</b>	<b>9.4%</b>	<b>\$3,950,196,783</b>	<b>138,810</b>

Academic Support		Student Services		Institutional Support		Operation & Maintenance		Scholarships & Fellowships		Total
\$10,531,106	10.9%	\$8,253,213	8.5%	\$20,512,845	21.1%	\$16,847,260	17.4%	\$6,104,991	6.3%	\$96,999,050
7,470,101	12.2%	5,957,409	9.7%	15,809,583	25.8%	11,798,072	19.3%	2,390,675	3.9%	61,277,374
10,637,901	12.6%	4,784,801	5.7%	10,649,468	12.6%	16,775,736	19.9%	8,701,851	10.3%	84,274,592
17,688,977	11.9%	8,078,963	5.4%	18,617,491	12.5%	26,358,257	17.7%	13,141,948	8.8%	148,743,321
37,034,186	11.1%	22,471,027	6.7%	53,741,057	16.0%	45,483,367	13.6%	39,422,190	11.8%	334,908,169
12,313,562	12.5%	9,576,503	9.7%	18,884,754	19.1%	11,623,985	11.8%	9,793,084	9.9%	98,833,193
65,799,414	10.3%	12,033,655	1.9%	94,772,680	14.8%	94,024,369	14.7%	17,908,318	2.8%	638,340,411
25,669,056	8.0%	23,720,115	7.4%	42,234,896	13.2%	45,317,839	14.1%	29,858,963	9.3%	320,660,665
220,590,627	15.2%	63,948,652	4.4%	164,265,794	11.3%	200,804,456	13.8%	84,976,155	5.8%	1,453,974,703
7,208,574	9.8%	3,322,380	4.5%	12,251,345	16.7%	11,029,888	15.0%	5,883,704	8.0%	73,539,381
55,656,114	13.3%	126,766,097	30.3%	74,432,260	17.8%	23,969,589	5.7%	19,230,499	4.6%	417,916,778
24,289,071	14.4%	8,860,175	5.2%	37,480,312	22.2%	21,500,838	12.7%	18,045,892	10.7%	169,193,644
1,958,336	3.6%	7,990,321	14.7%	13,949,980	25.6%	4,415,941	8.1%	7,281,486	13.4%	54,443,061
<b>\$496,847,025</b>	<b>12.6%</b>	<b>\$305,763,311</b>	<b>7.7%</b>	<b>\$577,602,465</b>	<b>14.6%</b>	<b>\$529,949,597</b>	<b>13.4%</b>	<b>\$262,739,756</b>	<b>6.6%</b>	<b>\$3,953,104,342</b>



## AID TO INDEPENDENT INSTITUTIONS, FY 2020

Institution	State Aid Amount
Capitol Technology University	\$670,957
Goucher College	2,466,084
Hood College	1,834,286
Johns Hopkins University	29,019,524
Loyola College of Maryland	6,534,728
Maryland Institute College of Art	2,823,062
McDaniel College	2,771,043
Mount St. Mary's University	2,676,349
Notre Dame of Maryland University	1,842,589
St. John's College	843,131
Stevenson University	4,358,920
Washington Adventist University	1,171,808
Washington College	2,012,424
<b>TOTAL</b>	<b>\$59,024,905</b>

**Source:**

Maryland Department of Budget and Management, FY 2021 Budget Book - Maryland Higher Education Commission, Joseph A. Sellinger Program  
See Technical Notes for more information.

## TOTAL STATE CAPITAL BUDGET AUTHORIZATIONS BY CAMPUS, FY 2017 - FY 2021

Institution	FY 2017	FY 2018
<b>FOUR-YEAR PUBLIC INSTITUTIONS</b>		
Bowie State University	\$31,501,000	-
Coppin State University	-	1,336,000
Frostburg State University	2,500,000	1,000,000
Salisbury University	425,000	-
Towson University	6,150,000	26,300,000
University of Baltimore	9,300,000	3,750,000
University of Maryland, Baltimore	85,000,000	6,490,000
University of Maryland, Baltimore County	7,640,000	40,249,000
University of Maryland, College Park	97,555,000	100,872,000
University of Maryland Eastern Shore	3,500,000	3,048,000
University of Maryland Global Campus	-	-
Morgan State University	40,400,000	10,360,000
St. Mary's College of Maryland	2,700,000	9,832,000
<b>Sub-Total</b>	<b>286,671,000</b>	<b>203,237,000</b>
<b>RELATED ENTITIES</b>		
University of Maryland Center for Environmental Science	-	-
University System of Maryland Office	39,761,000	88,651,000
<b>Sub-Total</b>	<b>39,761,000</b>	<b>88,651,000</b>
<b>COMMUNITY COLLEGES</b>		
Baltimore City Community College	248,000	-
Community Colleges	59,386,000	57,552,000
<b>Sub-Total</b>	<b>59,634,000</b>	<b>57,552,000</b>
<b>INDEPENDENT INSTITUTIONS</b>		
	9,600,000	9,700,000
<b>TOTAL</b>	<b>\$395,666,000</b>	<b>\$359,140,000</b>

**Source:**

Maryland Department of Budget and Management, Office of Capital Budgeting, Capital Improvements Authorized with General Obligation Bonds by the General Assembly, FY 2015-2019, 2019 Capital Budget  
See Technical Notes for more information.



<b>FY 2019</b>	<b>FY 2020</b>	<b>FY 2021</b>	<b>Total</b>
\$1,500,000	\$6,500,000	\$6,250,000	\$45,751,000
1,634,000	-	7,963,000	10,933,000
2,000,000	6,200,000	30,069,000	41,769,000
-	-	-	425,000
48,764,000	71,491,000	7,437,000	160,142,000
-	-	-	13,050,000
11,064,000	13,159,000	9,944,000	125,657,000
63,159,000	3,176,000	7,041,000	121,265,000
34,497,000	21,104,000	10,000,000	264,028,000
-	5,015,000	26,287,000	37,850,000
-	-	-	-
46,521,000	41,963,000	15,233,000	154,477,000
6,005,000	16,971,000	35,150,000	70,658,000
215,144,000	185,579,000	155,374,000	1,046,005,000
-	-	1,448,000	1,448,000
23,114,000	16,953,000	31,202,000	199,681,000
23,114,000	16,953,000	32,650,000	201,129,000
365,000	874,000	4,623,000	613,000
60,095,000	80,505,000	91,324,000	257,538,000
60,460,000	81,379,000	95,947,000	177,646,000
12,000,000	11,600,000	12,000,000	54,900,000
<b>\$310,718,000</b>	<b>\$295,511,000</b>	<b>\$295,971,000</b>	<b>\$1,479,680,000</b>

# tuition & fees

## COMMUNITY COLLEGE TUITION AND FEES FOR FULL-TIME STUDENTS (PER CREDIT HOUR), FY 2017 - FY 2021

RESIDENTS OF SERVICE AREA						1-Year	5-Year
Institution	FY 2017	FY 2018	FY 2019	FY 2020	FY 2021	Change	Change
Allegany College of Maryland	\$128	\$131	\$141	\$160	\$164	2.5%	28.3%
Anne Arundel Community College	134	137	139	143	147	3.0%	10.0%
Baltimore City Community College	135	133	133	140	146	4.2%	8.4%
Carroll Community College	160	163	163	166	172	3.5%	7.2%
Cecil College	157	159	150	155	159	2.6%	1.5%
Chesapeake College	151	154	159	162	162	0.2%	7.1%
College of Southern Maryland	148	154	159	164	164	0.1%	11.0%
Community College of Baltimore County	160	163	163	166	167	0.5%	4.1%
Frederick Community College	142	146	149	153	156	2.2%	10.0%
Garrett College	135	141	146	149	142	-4.7%	5.2%
Hagerstown Community College	131	133	136	143	139	-2.8%	6.1%
Harford Community College	139	151	155	159	159	-0.3%	14.2%
Howard Community College	156	162	164	166	170	2.2%	8.6%
Montgomery College	163	166	173	177	177	-0.2%	8.3%
Prince George's Community College	152	157	157	157	154	-1.7%	1.5%
Wor-Wic Community College	123	125	135	139	146	5.0%	18.7%
<b>AVERAGE</b>	<b>\$145</b>	<b>\$148</b>	<b>\$151</b>	<b>\$156</b>	<b>\$158</b>	<b>1.0%</b>	<b>9.1%</b>

**Source:**

Maryland Association of Community Colleges and institutional tuition and fee schedules  
See Technical Notes for more information.

## COMMUNITY COLLEGE TUITION AND FEES FOR FULL-TIME STUDENTS (PER CREDIT HOUR), FY 2017 - FY 2021

MARYLAND RESIDENTS, OUTSIDE OF SERVICE AREA						1-Year	5-Year
Institution	FY 2017	FY 2018	FY 2019	FY 2020	FY 2021	Change	Change
Allegany College of Maryland	\$239	\$241	\$253	\$275	\$282	2.5%	18.1%
Anne Arundel Community College	234	239	246	258	268	4.0%	14.7%
Baltimore City Community College	135	133	133	140	146	4.2%	8.4%
Carroll Community College	232	216	249	261	275	5.1%	18.1%
Cecil College	210	228	257	265	269	1.5%	28.1%
Chesapeake College	226	267	228	231	231	0.1%	2.4%
College of Southern Maryland	262	270	278	286	286	-0.1%	9.2%
Community College of Baltimore County	262	236	272	279	286	2.4%	9.3%
Frederick Community College	282	288	293	301	308	2.5%	9.3%
Garrett College	257	266	279	296	316	6.8%	23.0%
Hagerstown Community College	197	197	205	214	208	-2.6%	5.6%
Harford Community College	226	241	245	253	253	0.1%	11.8%
Howard Community College	239	245	252	260	267	2.5%	11.7%
Montgomery College	316	321	332	342	342	0.1%	8.3%
Prince George's Community College	240	252	252	252	249	-1.1%	3.9%
Wor-Wic Community College	254	258	260	260	270	3.8%	6.3%
<b>AVERAGE</b>	<b>\$238</b>	<b>\$244</b>	<b>\$252</b>	<b>\$261</b>	<b>\$266</b>	<b>2.0%</b>	<b>11.7%</b>

**Source:**

Maryland Association of Community Colleges and institutional tuition and fee schedules  
See Technical Notes for more information.



**COMMUNITY COLLEGE TUITION AND FEES FOR FULL-TIME STUDENTS  
(PER CREDIT HOUR), FY 2017 - FY 2021**

**OUT-OF-STATE RESIDENTS**

<b>Institution</b>	<b>FY 2017</b>	<b>FY 2018</b>	<b>FY 2019</b>	<b>FY 2020</b>	<b>FY 2021</b>	<b>1-Year Change</b>	<b>5-Year Change</b>
Allegany College of Maryland	\$284	\$287	\$310	\$339	\$349	2.9%	23.0%
Anne Arundel Community College	393	401	408	422	435	3.2%	10.8%
Baltimore City Community College	309	303	303	310	316	1.9%	2.4%
Carroll Community College	255	264	348	348	350	0.4%	37.1%
Cecil College	303	305	307	316	317	0.3%	4.7%
Chesapeake College	338	344	305	308	308	0.1%	-8.9%
College of Southern Maryland	387	397	358	368	368	0.1%	-4.8%
Community College of Baltimore County	325	330	391	401	417	3.9%	28.4%
Frederick Community College	374	381	388	398	407	2.4%	8.9%
Garrett College	297	306	329	354	378	6.8%	27.3%
Hagerstown Community College	255	260	265	275	268	-2.4%	5.1%
Harford Community College	313	329	336	346	346	0.0%	10.5%
Howard Community College	284	290	302	310	320	3.1%	12.5%
Montgomery College	430	437	453	468	468	0.0%	8.9%
Prince George's Community College	337	354	354	354	351	-0.8%	4.3%
Wor-Wic Community College	309	314	321	321	333	3.7%	7.8%
<b>AVERAGE</b>	<b>\$324</b>	<b>\$331</b>	<b>\$342</b>	<b>\$352</b>	<b>\$358</b>	<b>1.7%</b>	<b>10.4%</b>

**Source:**

Maryland Association of Community Colleges and institutional tuition and fee schedules  
See Technical Notes for more information.

**FOUR-YEAR PUBLIC INSTITUTION UNDERGRADUATE TUITION AND FEES, FY 2017 - FY 2021**

<b>Institution</b>	<b>FY 2017</b>	<b>FY 2018</b>	<b>FY 2019</b>	<b>FY 2020</b>	<b>FY 2021</b>	<b>1-Year Change</b>	<b>5-Year Change</b>
<b>RESIDENTS</b>							
Bowie State University	\$7,880	\$8,065	\$8,233	\$8,445	\$8,445	0.0%	7.2%
Coppin State University	6,448	6,536	6,625	6,716	6,716	0.0%	4.2%
Frostburg State University	8,702	8,914	9,172	9,410	9,410	0.0%	8.1%
Salisbury University	9,364	9,582	9,824	10,044	10,044	0.0%	7.3%
Towson University	9,408	9,694	9,940	10,198	10,198	0.0%	8.4%
University of Baltimore	8,596	8,824	8,958	9,096	9,096	0.0%	5.8%
University of Maryland, Baltimore	9,081	9,224	9,462	9,951	9,951	0.0%	9.6%
University of Maryland, Baltimore County	11,264	11,518	11,778	12,028	12,028	0.0%	6.8%
University of Maryland, College Park	10,181	10,416	10,595	10,779	10,779	0.0%	5.9%
University of Maryland Eastern Shore	7,804	8,042	8,302	8,558	8,558	0.0%	9.7%
University of Maryland Global Campus	7,176	7,296	7,416	7,560	7,560	0.0%	5.4%
Morgan State University	7,636	7,767	7,900	8,008	7,628	-4.7%	-0.1%
St. Mary's College of Maryland	14,192	14,496	14,806	15,124	15,124	0.0%	6.6%
<b>AVERAGE</b>	<b>\$9,056</b>	<b>\$9,260</b>	<b>\$9,462</b>	<b>\$9,686</b>	<b>\$9,657</b>	<b>-0.3%</b>	<b>6.2%</b>
<b>NON-RESIDENTS</b>							
Bowie State University	\$18,416	\$18,653	\$18,873	\$19,136	\$19,136	0.0%	3.9%
Coppin State University	12,178	12,684	12,896	13,113	13,113	0.0%	7.7%
Frostburg State University	21,226	22,262	22,892	23,510	23,510	0.0%	10.8%
Salisbury University	17,776	18,622	19,526	20,110	20,110	0.0%	13.1%
Towson University	21,076	22,140	23,208	24,334	24,334	0.0%	15.5%
University of Baltimore	20,242	20,704	21,076	21,456	21,456	0.0%	6.0%
University of Maryland, Baltimore	29,158	31,096	32,560	34,616	33,171	-4.2%	13.8%
University of Maryland, Baltimore County	24,492	25,654	26,872	27,662	27,662	0.0%	12.9%
University of Maryland, College Park	32,045	33,623	35,216	36,891	36,891	0.0%	15.1%
University of Maryland Eastern Shore	17,188	18,048	18,508	18,968	18,968	0.0%	10.4%
University of Maryland Global Campus	12,336	12,336	12,336	12,336	12,336	0.0%	0.0%
Morgan State University	17,504	17,833	18,167	18,480	18,100	-2.1%	3.4%
St. Mary's College of Maryland	29,340	29,948	30,568	31,200	31,200	0.0%	6.3%
<b>AVERAGE</b>	<b>\$20,998</b>	<b>\$21,816</b>	<b>\$22,515</b>	<b>\$23,216</b>	<b>\$23,076</b>	<b>-0.6%</b>	<b>9.0%</b>

**NON-RESIDENTS**

**Source:**

Institutional tuition and fee schedules  
See Technical Notes for more information.

## FOUR-YEAR PUBLIC INSTITUTION GRADUATE TUITION PER CREDIT HOUR, FY 2017 - FY 2021

Institution	FY 2017	FY 2018	FY 2019	FY 2020	FY 2021	1-Year Change	5-Year Change
<b>RESIDENTS</b>							
Bowie State University	\$399	\$407	\$415	\$423	\$423	0.0%	6.0%
Coppin State University	315	331	337	344	344	0.0%	9.2%
Frostburg State University	394	413	433	437	437	0.0%	10.9%
Salisbury University	381	392	404	412	412	0.0%	8.1%
Towson University	379	398	418	439	439	0.0%	15.8%
University of Maryland, Baltimore County	603	621	640	659	659	0.0%	9.3%
University of Maryland, College Park	651	683	717	731	731	0.0%	12.3%
University of Maryland Eastern Shore	313	319	325	332	332	0.0%	6.1%
University of Maryland Global Campus	458	458	458	480	480	0.0%	4.8%
Morgan State University	393	492	515	537	524	-2.3%	33.4%
St. Mary's College of Maryland	331	332	338	367	367	0.0%	10.7%
<b>AVERAGE</b>	<b>\$429</b>	<b>\$441</b>	<b>\$455</b>	<b>\$469</b>	<b>\$468</b>	<b>-0.2%</b>	<b>8.4%</b>
<b>NON-RESIDENTS</b>							
Bowie State University	\$688	\$695	\$702	\$709	\$709	0.0%	3.1%
Coppin State University	580	609	621	633	633	0.0%	9.1%
Frostburg State University	506	531	557	560	560	0.0%	10.7%
Salisbury University	670	703	724	746	746	0.0%	11.3%
Towson University	785	824	865	908	908	0.0%	15.7%
University of Maryland, Baltimore County	997	1,047	1,099	1,132	1,132	0.0%	13.5%
University of Maryland, College Park	1,404	1,474	1,548	1,625	1,625	0.0%	15.7%
University of Maryland Eastern Shore	564	592	604	616	616	0.0%	9.2%
University of Maryland Global Campus	659	659	659	659	659	0.0%	0.0%
Morgan State University	770	890	933	976	963	-1.3%	25.1%
St. Mary's College of Maryland	332	332	338	367	367	0.0%	10.5%
<b>AVERAGE</b>	<b>\$762</b>	<b>\$760</b>	<b>\$786</b>	<b>\$812</b>	<b>\$811</b>	<b>-0.1%</b>	<b>6.0%</b>

**Source:**

Institutional tuition and fee schedules  
See Technical Notes for more information.



# financial aid

## CHARACTERISTICS OF UNDERGRADUATE FINANCIAL AID RECIPIENTS AT COMMUNITY COLLEGES, FY 2017 - FY 2019

	FY 2017	FY 2018	FY 2019
<b>FINANCIAL CHARACTERISTICS</b>			
Total Number of Aid Recipients	77,544	74,101	71,658
Total Aid Received	\$308.6 mil	\$308.2mil	\$294.6 mil
Average Adjusted Gross Income	\$36,251	\$37,711	\$39,135
Average Aid Award	\$3,980	\$4,159	\$4,111
Average Need	\$14,468	\$14,291	\$14,875
% Who Received a Federal Pell Grant	59%	60%	58%
% Who Received a Loan	27%	25%	24%
Average Loan Amount	\$5,282	\$5,558	\$5,619
<b>DEMOGRAPHICS</b>			
Men	36%	36%	35%
Women	64%	64%	65%
African American	38%	38%	37%
Asian	6%	6%	6%
Hispanic	10%	11%	11%
White	38%	38%	37%
Other	8%	8%	9%
Dependent Student Status	41%	42%	40%
Independent Student Status	39%	39%	38%

**Source:**

Maryland Higher Education Commission, Financial Aid Information System  
See Technical Notes for more information.

## CHARACTERISTICS OF UNDERGRADUATE FINANCIAL AID RECIPIENTS AT FOUR-YEAR PUBLIC INSTITUTIONS, FY 2017 - FY 2019

	FY 2017	FY 2018	FY 2019
<b>FINANCIAL CHARACTERISTICS</b>			
Total Number of Aid Recipients	97,595	97,678	101,000
Total Aid Received	\$1,125.9 mil	\$1,147.2 mil	\$1,185.0 mil
Average Adjusted Gross Income	\$71,004	\$71,827	\$72,814
Average Aid Award	\$11,537	\$11,745	\$11,733
Average Need	\$19,818	\$19,941	\$20,549
% Who Received a Federal Pell Grant	45%	46%	46%
% Who Received a Loan	62%	60%	57%
Average Loan Amount	\$10,230	\$10,399	\$10,707
<b>DEMOGRAPHICS</b>			
Men	45%	45%	45%
Women	55%	55%	55%
African American	35%	35%	34%
Asian	7%	8%	8%
Hispanic	8%	8%	8%
White	39%	39%	38%
Other	11%	11%	12%
Dependent Student Status	56%	54%	52%
Independent Student Status	34%	32%	34%

**Source:**

Maryland Higher Education Commission, Financial Aid Information System  
See Technical Notes for more information.

## CHARACTERISTICS OF UNDERGRADUATE FINANCIAL AID RECIPIENTS AT STATE-AIDED INDEPENDENT INSTITUTIONS, FY 2017 - FY 2019

	FY 2017	FY 2018	FY 2019
<b>FINANCIAL CHARACTERISTICS</b>			
Total Number of Aid Recipients	21,378	21,842	21,636
Total Aid Received	\$725.2 mil	\$745.6 mil	\$782.1 mil
Average Adjusted Gross Income	\$104,533	\$106,148	\$115,820
Average Aid Award	\$33,924	\$34,137	\$36,147
Average Need	\$40,394	\$41,539	\$42,598
% Who Received a Federal Pell Grant	27%	28%	28%
% Who Received a Loan	67%	64%	62%
Average Loan Amount	\$14,919	\$15,015	\$14,974
<b>DEMOGRAPHICS</b>			
Men	43%	40%	40%
Women	57%	60%	60%
African American	16%	16%	17%
Asian	8%	8%	7%
Hispanic	9%	9%	9%
White	55%	53%	53%
Other	12%	13%	14%
Dependent Student Status	72%	71%	72%
Independent Student Status	10%	10%	8%

**Source:**

Maryland Higher Education Commission, Financial Aid Information System  
See Technical Notes for more information.

## FINANCIAL AID AWARDED AT COMMUNITY COLLEGES, FY 2017 - FY 2019

	FY 2017		FY 2018		FY 2019	
	Total Aid (in millions)	Average Award	Total Aid (in millions)	Average Award	Total Aid (in millions)	Average Award
<b>Federal</b>						
Grants/Scholarships	\$144.80	\$3,111	\$146.93	\$3,277	\$141.81	\$3,326
Loans	106.51	5,229	101.39	5,509	91.83	5,551
Work Study	3.50	2,601	3.32	2,863	3.29	2,665
<b>State</b>						
Need-Based Aid (Grants/Scholarships)	11.57	977	12.15	1,002	11.16	1,015
Legislative Aid	1.39	884	1.29	956	1.17	876
Career Aid	0.04	1,028	0.05	1,235	0.07	1,775
Unique Populations	0.16	3,292	0.21	3,491	0.24	3,353
<b>Institutional</b>						
Grants	5.88	855	6.41	695	6.12	770
Scholarships	11.39	1,180	12.14	1,279	12.83	1,314
Work Study	0.12	1,898	0.09	1,638	0.10	2,097
Tuition Waivers	11.92	944	12.12	927	12.75	902
<b>Private</b>						
Grants/Scholarships	8.50	1,156	8.96	1,378	10.14	1,485
Loans	2.81	5,856	3.11	6,088	3.06	6,591

**Source:**

Maryland Higher Education Commission, Financial Aid Information System  
See Technical Notes for more information.

**FINANCIAL AID AWARDED TO UNDERGRADUATES AT  
FOUR-YEAR PUBLIC INSTITUTIONS, FY 2017 - FY 2019**

	FY 2017		FY 2018		FY 2019	
	Total Aid (in millions)	Average Award	Total Aid (in millions)	Average Award	Total Aid (in millions)	Average Award
<b>Federal</b>						
Grants/Scholarships	\$176.18	\$3,944	\$188.12	\$4,139	\$200.30	\$4,234
Loans	544.40	9,260	529.32	9,349	532.09	9,543
Work Study	4.01	1,916	4.62	2,161	4.38	2,158
<b>State</b>						
Need-Based Aid (Grants/Scholarships)	53.75	3,062	58.32	3,360	56.54	3,381
Legislative Aid	8.15	1,195	8.00	1,162	7.83	1,121
Career Aid	0.39	3,474	0.49	3,451	0.48	3,421
Unique Populations	1.55	7,298	1.75	7,566	2.24	7,583
<b>Institutional</b>						
Grants	67.04	2,770	75.79	2,895	78.35	2,948
Scholarships	101.07	4,443	108.64	4,379	114.51	4,484
Work Study	3.14	5,133	2.97	5,452	2.93	5,552
Tuition Waivers	29.64	3,608	27.65	3,632	32.30	3,601
<b>Private</b>						
Grants/Scholarships	60.31	5,050	62.48	5,117	66.31	5,231
Loans	76.29	13,206	79.05	13,702	86.71	14,382

**Source:**

Maryland Higher Education Commission, Financial Aid Information System  
See Technical Notes for more information.

**FINANCIAL AID AWARDED TO UNDERGRADUATES AT  
STATE-AIDED INDEPENDENT INSTITUTIONS, FY 2017 - FY 2019**

	FY 2017		FY 2018		FY 2019	
	Total Aid (in millions)	Average Award	Total Aid (in millions)	Average Award	Total Aid (in millions)	Average Award
<b>Federal</b>						
Grants/Scholarships	\$34.56	\$5,787	\$39.61	\$6,157	\$42.85	\$6,650
Loans	171.52	12,439	169.39	12,517	157.90	12,148
Work Study	4.28	1,989	5.72	1,917	6.20	1,932
<b>State</b>						
Need-Based Aid (Grants/Scholarships)	13.01	5,918	15.46	7,020	15.15	6,691
Legislative Aid	1.51	1,221	1.53	1,166	1.53	1,168
Career Aid	0.17	3,711	0.19	3,494	0.16	3,229
Unique Populations	0.36	8,682	0.36	8,658	0.34	9,199
<b>Institutional</b>						
Grants	204.20	17,062	210.90	17,766	230.93	18,592
Scholarships	223.87	15,974	231.69	17,037	249.12	17,898
Work Study	3.14	5,378	2.43	5,343	2.02	4,847
Tuition Waivers	16.20	20,172	15.40	18,830	17.71	21,338
Loans	0.80	7,795	0.98	8,328	1.05	4,505
<b>Private</b>						
Grants/Scholarships	11.78	4,835	12.43	4,646	15.06	5,121
Loans	39.82	18,704	39.53	18,387	42.05	19,343

**Source:**

Maryland Higher Education Commission, Financial Aid Information System  
See Technical Notes for more information.

## MARYLAND FINANCIAL AID PROGRAM EXPENDITURES, FY 2020

	Dollars Disbursed	Number of Awards	Average Award
Charles W. Riley Firefighter and Ambulance and Rescue Squad Member Scholarship Program	\$105,506	25	\$4,220
Cybersecurity Public Service Scholarship Award	66,096	16	4,131
Edward T. and Mary A. Conroy Memorial Scholarship Program and Jean B. Cryor Memorial Scholarship Program	2,627,740	323	8,135
Delegate Scholarship	6,551,644	6,424	1,020
Graduate and Professional Scholarship	1,129,539	404	2,796
Hal & Jo Cohen Graduate Nursing Faculty Scholarship	3,048,057	277	11,004
Howard P. Rawlings Campus-Based Educational Assistance Grant	1,926,950	946	2,037
Howard P. Rawlings Educational Assistance Grant	50,093,775	23,024	2,176
Howard P. Rawlings Guaranteed Access Grant	36,725,875	2,711	13,547
2+2 Transfer Scholarship Program	287,000	193	1,487
Janet L. Hoffman Loan Assistance Repayment Program	698,300	112	6,235
Loan Assistance Repayment Program - Dental Care	356,100	*	*
Loan Assistance Repayment Program - Physicians	655,431	27	24,275
Loan Assistance Repayment Program - Foster Care Recipients	6,363	*	*
Part-Time Grant	5,028,423	8,881	566
Senatorial Scholarship	4,882,488	7,010	697
Jack F. Tolbert Memorial Student Grant Program	94,500	189	500
Maryland Community College Promise Scholarship	3,090,362	966	3,199
Teaching Fellows for Maryland Scholarship	881,107	62	14,211
Richard W. Collins III Leadership with Honors Scholarship	450,000	79	5,696
Workforce Development Sequence Scholarship Program	1,000,000	741	1,350
Veterans of the Afghanistan and Iraq Conflicts Scholarship	637,286	123	5,181
Workforce Shortage Student Assistance Grant	1,048,000	330	3,176
<b>GRAND TOTAL</b>	<b>\$121,390,542</b>	<b>52,880</b>	<b>\$2,296</b>

**Source:**

Maryland Higher Education Commission, Maryland College Aid Processing System 2020  
See Technical Notes for more information.



# private career schools

## ENROLLMENT BY SCHOOL, NUMBER OF PROGRAMS, NUMBER OF COMPLETERS, AND EMPLOYMENT RATES, 2018 - 2019

School	# of Programs	Enrollment	Completers	Employment
<b>Allied Health</b>				
All-State Career	4	371	253	38.7%
American Red Cross Chesapeake Region	1	239	215	32.6%
Aspire School of Learning	1	52	51	2.0%
Baltimore Academy of Nursing Assistants	1	77	71	98.6%
Bethel Healthcare Institute, Inc.	1	22	21	66.7%
BioTechnical Institute of Maryland, Inc.	1	42	32	65.6%
Cambridge Nursing Assistant Academy	1	197	197	96.4%
Cambridge Nursing Assistant Academy - Gaithersburg	1	192	192	92.7%
Care Xpert Academy (CXA)	1	156	156	100.0%
Caroline Center	2	98	73	68.5%
Caroline Center West	1	35	23	69.6%
Compassionate Nursing Assistant Academy	1	78	74	77.0%
DATS of Maryland at Annapolis	1	27	17	70.6%
DATS of Maryland at Columbia	1	39	21	33.3%
DATS of Maryland at Germantown	1	26	19	42.1%
DATS of Maryland at Westminster	1	30	21	42.9%
Demas Academy	1	82	82	73.2%
Dental Assisting School of Maryland	1	4	2	0.0%
Dominion Academy, Inc.	1	86	85	47.1%
Fomen Nursing Assistant Training Academy	1	80	80	100.0%
Fomen Nursing Assistant Training Academy - Glen Burnie	1	79	0	100.0%
Fortis Institute - Towson	4	688	178	85.4%
Greenbelt Career Institute	1	97	1	Not reported
Health Focus, Inc.	1	159	154	50.6%
Institute of Health Sciences	1	216	73	97.3%
IT Works Learning Center - Fayette	1	205	136	83.8%
IT Works Learning Center - Manor Care	1	199	121	66.9%
Johns Hopkins Hospital School of Cardiac Sonography	1	8	4	100.0%
Knowledge First Institute	1	138	138	100.0%
Maryland Dental Assistant School	1	34	16	68.8%
Morning Star Academy	1	213	213	99.5%
National Phlebotomy Association	1	6	0	0.0%
NurseOne, Inc.	1	269	269	30.1%
Nursing Assistant Academy (The)	1	133	119	92.4%
Perpetual School of Nursing Assistant	1	86	86	44.2%
Precise Academy	1	44	44	88.6%
Quality First Career Center, Inc.	3	119	113	92.9%
Stein Academy - School of Health, Technology & Car	5	304	261	100.0%
Top Knowledge Healthcare Institute	1	128	102	56.9%
Trinity Nursing Academy, Inc.	1	59	59	86.4%
Vision Allied Health Institute	1	160	139	99.3%
XL Career School	1	2	2	0.0%
<b>Sub-Total</b>	<b>55</b>	<b>5,279</b>	<b>3,913</b>	<b>77.2%</b>
<b>Audio-Video/Radio/TV</b>				
Omega Studios' School of Applied Recording Arts and Sciences (The)	6	149	61	85.2%
Sheffield Institute for the Recording Arts (The)	4	101	71	66.2%
<b>Sub-Total</b>	<b>10</b>	<b>250</b>	<b>132</b>	<b>75.0%</b>

**ENROLLMENT BY SCHOOL, NUMBER OF PROGRAMS,  
NUMBER OF COMPLETERS, AND EMPLOYMENT RATES, 2018 - 2019 (continued)**

<b>School</b>	<b># of Programs</b>	<b>Enrollment</b>	<b>Completers</b>	<b>Employment</b>
<b>Barbering/Cosmetology</b>				
Academy of Professional Barber/Stylists	1	58	29	72.4%
Aspen Beauty Academy - Laurel	1	76	17	76.5%
Avara's Academy of Hair Design	1	82	32	71.9%
Aveda Institute Maryland	2	36	28	96.4%
Award Beauty School	3	242	80	81.3%
Baltimore Beauty & Barber School	2	137	8	62.5%
Baltimore Studio of Hair Design School of Cosmetology	1	56	18	94.4%
Bladensburg Barber School	1	67	28	40.0%
Blades School of Hair Design	1	113	32	78.1%
Chesapeake School of Esthetics: Skin Care & Makeup Artistry	1	15	15	86.7%
Cortiva Institute	1	95	29	20.7%
Del-Mar-Va Beauty Academy	1	73	22	50.0%
Empire Beauty School	1	138	31	38.7%
Empire Beauty School - Glen Burnie	1	184	32	40.6%
Hair Academy	2	660	131	74.8%
Hair Academy II, Inc.	3	314	67	70.1%
Hair Expressions Academy - Paul Mitchell the School - Jessup	2	176	52	65.4%
Hair Expressions - Paul Mitchell Partner School	3	171	51	56.9%
Maryland Beauty Academy - Essex	2	77	28	85.7%
Maryland Beauty Academy - Westminster	1	27	9	77.8%
Maryland Institute of Nail Tech	1	42	42	66.7%
Montgomery Beauty School	2	170	46	69.6%
Robert Paul Academy of Cosmetology Arts & Sciences	3	108	38	65.8%
Shawntay's School of Creative Nails	1	50	50	98.0%
The Academy of Makeup	1	60	59	45.8%
The Institute of Epidermal Sciences	1	6	2	100.0%
THE TEMPLE Annapolis: A Paul Mitchell Partner School	1	284	72	73.6%
THE TEMPLE: A Paul Mitchell Partner School	1	271	78	67.9%
Von Lee International School of Aesthetics	2	131	101	50.5%
<b>Sub-Total</b>	<b>44</b>	<b>3,919</b>	<b>1,227</b>	<b>68.5%</b>
<b>Bartending</b>				
Maryland Bartending Academy	1	509	462	66.2%
Maryland Bartending School	1	340	222	50.9%
<b>Sub-Total</b>	<b>2</b>	<b>849</b>	<b>684</b>	<b>61.3%</b>
<b>Massage</b>				
Central Maryland School of Massage	1	102	69	26.1%
Columbia Institute	1	69	30	40.0%
Cortiva Institute	1	72	32	59.4%
Fortis Institute - Towson	1	58	22	54.5%
Hair Academy	1	104	37	45.9%
Holistic Massage Training Institute	1	76	31	58.1%
Potomac Massage Training Institute	1	64	17	64.7%
<b>Sub-Total</b>	<b>7</b>	<b>545</b>	<b>238</b>	<b>45.0%</b>
<b>Montessori Instruction</b>				
Institute for Advanced Montessori Studies	4	122	26	80.8%
Maryland Center for Montessori Studies	1	8	7	100.0%
<b>Sub-Total</b>	<b>5</b>	<b>130</b>	<b>33</b>	<b>84.8%</b>



**ENROLLMENT BY SCHOOL, NUMBER OF PROGRAMS,  
NUMBER OF COMPLETERS, AND EMPLOYMENT RATES, 2018 - 2019 (continued)**

<b>School</b>	<b># of Programs</b>	<b>Enrollment</b>	<b>Completers</b>	<b>Employment</b>
<b>Real Estate</b>				
Academy of Real Estate	1	117	73	#
Career Academy of Real Estate	1	10	9	#
Champion Institute of Real Estate	2	115	103	#
Coldwell Banker Residential Brokerage School of RE	1	622	442	#
Diana School of Real Estate	1	7	5	#
Dias Real Estate Academy	1	153	126	#
Don Gurney Academy of Real Estate	1	6	3	#
Douglas Real Estate Academy	1	20	19	#
Ed Smith Real Estate School	1	107	107	#
Elite Learning Academy	1	165	131	#
Express Brokers Academy, LLC	1	4	0	#
Frederick Academy of Real Estate	1	82	33	#
GBBR® School of Real Estate (The)	1	304	190	#
Kirks Institute for Advanced Real Estate Studies	1	6	6	#
Lawyers Advantage Career School	1	14	3	#
Long & Foster Institute of Real Estate	1	1,464	968	#
Maryland Real Estate Academy	1	50	35	#
Maryland Real Estate Career Institute	1	58	48	#
Metropolitan Real Estate Academy	1	38	32	#
O'Brien Institute of Real Estate	1	76	45	#
Plan2Pass Real Estate School	1	56	48	#
Real Estate Education Center of MD	2	275	148	#
Real Estate Empower	1	6	6	#
Real Estate Institute (The)	1	1	1	#
Southern Maryland Association of REALTORS Real Estate Academy	1	39	34	#
Tristar Academy Inc.	1	473	263	#
Weichert Real Estate School	1	1,090	561	#
<b>Sub-Total</b>	<b>29</b>	<b>5,358</b>	<b>3,439</b>	<b>#</b>
<b>Truck Driving/Mechanical/Construction Trade</b>				
All-State Career	3	682	442	43.4%
Jane Addams Resource Corporation	4	48	24	66.7%
North American Trade Schools	9	836	381	87.9%
Pittsburgh Institute of Aeronautics	1	165	40	82.5%
Power52 Energy Institute	1	52	30	93.3%
Power52 Energy Institute Baltimore City	1	32	28	50.0%
Southern MD Tri-County Community Action Committee	1	36	24	45.8%
<b>Sub-Total</b>	<b>20</b>	<b>1,851</b>	<b>969</b>	<b>64.9%</b>
<b>Other</b>				
Accounting and Bookkeeping Center, Inc. (The)	2	4	4	100.0%
Drycleaning and Laundry Institute	1	27	27	0.0%
I'm Still Standing Community Corporation	1	53	2	48.0%
Maritime Institute of Technology & Graduate Studies (MITAGS)	3	8	0	0.0%
Maryland Institute of Criminal Justice	1	8	8	75.0%
<b>Sub-Total</b>	<b>8</b>	<b>100</b>	<b>41</b>	<b>63.4%</b>
<b>TOTAL</b>	<b>180</b>	<b>18,281</b>	<b>10,676</b>	<b>53.3%</b>

**Source:**

Maryland Higher Education Commission Private Career School Annual Reports, 2019  
#: See Technical Notes for more information.

# distance education

## ENROLLMENT IN DISTANCE EDUCATION CREDIT COURSES BY LEVEL AND SEGMENT, CY 2019

	Undergraduate Enrollment	Graduate Enrollment
<b>Community Colleges</b>	182,519	-
<b>Four-Year Public Institutions</b>	375,772	80,962
UMGC	269,627	44,929
Other Four-Year Public Institutions	106,145	36,033
<b>Private Institutions</b>	12,310	69,928
Independent State-Aided	12,171	63,801
Other Private Institutions	139	6,127
<b>TOTAL</b>	<b>570,601</b>	<b>150,890</b>

**Source:**

Maryland Higher Education Commission, Distance Education Survey, 2019  
See Technical Notes for more information.

## NUMBER OF DISTANCE EDUCATION CREDIT-BEARING COURSE SECTIONS, CY 2019

	Undergraduate Course Sections	Graduate Course Sections
<b>Community Colleges</b>	11,076	-
<b>Four-Year Public Institutions</b>	17,332	5,521
UMGC	12,456	2,468
Other Four-Year Public Institutions	4,876	3,053
<b>Private Institutions</b>	1,083	5,958
Independent State-Aided	957	4,586
Other Private Institutions	126	1,372
<b>TOTAL</b>	<b>29,491</b>	<b>11,479</b>

**Source:**

Maryland Higher Education Commission, Distance Education Survey, 2019  
See Technical Notes for more information.

## UNDERGRADUATE STUDENT HEADCOUNT BY SEGMENT AND ENROLLMENT PATTERN, CY 2019

	Traditional Only		Distance Only		Mixed - Both Distance and Traditional	
	Headcount	Percentage	Headcount	Percentage	Headcount	Percentage
<b>Community Colleges</b>	125,407	59.2%	28,877	13.6%	57,502	27.2%
<b>Four-Year Public Institutions</b>	82,510	40.2%	72,348	35.3%	50,171	24.5%
UMGC	4,162	5.3%	68,546	88.0%	5,158	6.6%
Other Four-Year Public Institutions	78,348	61.6%	3,802	3.0%	45,013	35.4%
<b>All Private Institutions</b>	29,260	82.4%	1,720	4.8%	4,533	12.8%
Independent State-Aided	28,018	81.8%	1,717	5.0%	4,522	13.2%
Other Private Institutions	1,242	98.9%	3	0.2%	11	0.9%
<b>TOTAL</b>	<b>237,177</b>	<b>52.4%</b>	<b>102,945</b>	<b>22.8%</b>	<b>112,206</b>	<b>24.8%</b>

**Source:**

Maryland Higher Education Commission, Distance Education Survey, 2019  
See Technical Notes for more information.

## GRADUATE STUDENT HEADCOUNT BY SEGMENT AND ENROLLMENT PATTERN, CY 2019

	Traditional Only		Distance Only		Mixed - Both Distance and Traditional	
	Headcount	Percentage	Headcount	Percentage	Headcount	Percentage
<b>Four-Year Public Institutions</b>	23,535	41.7%	25,886	45.8%	7,075	12.5%
UMGC	292	1.5%	19,177	98.5%	3	0.0%
Other Four-Year Public Institutions	23,243	62.8%	6,709	18.1%	7,072	19.1%
<b>All Private Institutions</b>	19,057	42.4%	15,696	34.9%	10,192	22.7%
Independent State-Aided	18,100	42.9%	14,520	34.4%	9,570	22.7%
Other Private Institutions	957	34.7%	1,176	42.7%	622	22.6%
<b>TOTAL</b>	<b>42,592</b>	<b>42.0%</b>	<b>41,582</b>	<b>41.0%</b>	<b>17,267</b>	<b>17.0%</b>

**Source:**

Maryland Higher Education Commission, Distance Education Survey, 2019  
See Technical Notes for more information.

# technical notes

## MARYLAND HIGHER EDUCATION COMMISSION (MHEC) 2021 DATA BOOK

---

### General Notes

Race/Ethnicity data are reported in alignment with National Center for Education Statistics (NCES) requirements. Individuals reporting Hispanic ethnicity are always reported as Hispanic regardless of any racial category identified. Individuals identifying as non-citizens are always reported as foreign/non-resident alien regardless of any race/ethnicity identified.

Institutions report gender to MHEC in four categories: "male"; "female"; "unknown, male assigned;" and "unknown, female assigned." Institutions randomly assign students who report an unknown or other gender to either the "unknown, male assigned" or "unknown, female assigned" categories. MHEC reporting includes these randomly-assigned students in the respective category to which they have been assigned by the institution.

MHEC uses de-identified unit record data (name, address, and other Personally Identifiable Information are stripped), and merges data (financial aid data and degree data, for example) on a scrambled unique identifier based on institutional submissions. These data may undercount outcomes due to inconsistent unique identifier data provided by the institution. Additionally, not all data are reported at the unit-record level; some data are provided to MHEC in aggregated format.

All figures are correct as of time of publication.

Asterisks (\*) indicate suppressed data ( $n < 10$ ) to protect student privacy. Complementary suppression may be applied, as needed.

### Comparative Statistics

To produce nationally comparable data, the enrollment and degree data within this table are based upon *Chronicle of Higher Education* analysis of data reported to the NCES data through the Integrated Postsecondary Education Data Survey (IPEDS). These figures may differ slightly from those produced using the MHEC Enrollment Information System and Degree Information System.

Figures may not sum to 100% due to rounding.

High school graduate projections are based upon data provided by the NCES *Projections of Education Statistics to 2028*, Table 10. The estimate includes students attending public schools only. Figures for Academic Years 2019 to 2028 are projections.

The racial/ethnic minority category includes African American, Asian, Hispanic, American Indian/Alaska Native, and Native Hawaiian/Pacific Islander students and students identifying as Two or More Races. It does not include white students or students in foreign and/or unknown categories. The underrepresented minority category includes African American, Hispanic, and American Indian/ Alaska Native students.

The "Private Institutions" share of campus enrollment distribution includes private non-profit 2-year institutions, private non-profit 4-year institutions, private for-profit 2-year institutions, and private for-profit 4-year institutions.

Projected increases in Maryland campus enrollments are from the Maryland Higher Education Commission's *Enrollment Projections 2020-2029 Maryland Public Colleges and Universities report, June 2020*, and include the total headcount of students enrolling in the state's public two-year and four-year institutions. National projections are from the National Center for Education Statistics, *Projections of Education Statistics to 2028*, Table 14.

Figures for state spending on student financial aid utilize estimates for Maryland expenditures produced by the National Association of State Student Grant and Aid Programs (NASSGAP).

### Students

University of Maryland Global Campus figures include both stateside and overseas enrollment.

Students may be enrolled at more than one institution. They are included in enrollment figures for each institution at which they are enrolled.

Data include all degree- and non-degree-seeking students enrolled in credit courses.

SANS Technology Institute is not included in the undergraduate enrollment figures due to data reporting problems.

Enrollment files represent student enrollments as of the institution's official term freeze/census date, which typically represents the final date of which students may register for classes. Figures from later in the term may reflect different enrollment counts.

This report defines undergraduate and graduate students by cumulative credit earned as of term freeze/census date. Undergraduate student counts include high school students dually enrolled in both high school and for-credit college courses.

Full-time and part-time enrollment status is defined by institutions based on total semester hour credit load as of term freeze date. Generally, undergraduate students must enroll in at least 12 credit hours and graduate students at least 9 hours to be considered full-time.

Maryland residents are identified using their place of residence at the time of application to the institution.

Race/Ethnicity data include full- and part-time students enrolled in undergraduate, graduate, and professional courses.

The College Board implemented a redesigned SAT in 2016. Scores from previous years are not directly comparable.

Reported SAT scores are based upon the 2016 redesigned SAT. A very small number of students submit scores from prior administrations, which are not included in these figures.

Institutions submit aggregated data on average SAT scores for all incoming freshmen.

Some institutions do not require SAT scores for admission. Institutional score ranges are based upon those scores that were used as a basis for admitting students to the institution.

Student age is determined based upon year of birth. For the Fall 2019 semester, students are identified as 25 or older if they were born at any time during the 1994 calendar year.

Maryland public institutions include community colleges and four-year public colleges and universities.

The need for remediation is determined by individual institutions. Remedial assessment is based upon students' status at the time of entry.

Recent Maryland public high school graduates are defined as those graduating from a Maryland public high school, identified using the College Board School Code, who graduated in the 2017-2018 academic year and first enrolled in higher education in Maryland in fall 2018. Analysis relies on high school graduation date and reporting of remedial assessment data; missing data for these variables may result in underreporting.

Maryland residents whose county of residence is unknown are included in institution-level remedial data, but excluded from reporting by County of Residence

Salisbury University and St. Mary's College of Maryland do not offer remedial coursework.

Pell enrollment figures include undergraduate students receiving Pell awards during FY19 who were enrolled during the fall semester of 2018. Students may have received a Pell grant at more than one institutions; they are included in figures at each institution at which they received the award.

## Retention and Graduation

Retention rates at four-year public colleges and universities give the percentage of the fall 2018 first-time, full-time undergraduate cohort who returned to the same institution in fall 2019. Pell grant recipients are students in the fall 2018 analysis cohort who received Pell at any time during the 2018-19 academic year.

Graduation rates at four-year public colleges and universities give the percentage of the fall 2013 cohort of first-time, full-time undergraduates at four-year public colleges or universities who graduate or transfer within four years. Institutional rates include students initially enrolled at the institution who received a bachelor's degree from any public or private college or university in the State. Statewide rates represent students enrolled at any public four-year institution who received a bachelor's degree from any public or private college or university in the State. Pell grant recipients are students in the fall 2013 analysis cohort who received Pell at any time during the 2013-2014 academic year.

Community college retention and graduation rates give the percentages of first-time, full-time students in the fall 2015 cohort who graduate or transfer within four years.

Transfer rates contained in the community college retention and graduation rates table represent students who enrolled at four-year Maryland institutions within four years of initial enrollment at the community college, with or without receiving a degree or certificate at any Maryland community college.

Graduation rates for community colleges contained in the retention and graduation rates table represent students who earned an associate degree or a certificate at any Maryland community college but did not transfer to a Maryland four-year institution.

Community college retention and graduation rates for Pell recipients include students in the retention and graduation cohort who received Pell at any time during the 2015-16 academic year.

The number of community college students transferring to four-year public institution figures include students enrolled in a community college during Fall 2018 who subsequently enrolled in a four-year public college or university during Fall 2019. This does not necessarily represent formal transfer activity.

The Degree Progress Analysis is a model used to report the progress toward degree completion of community college students and incorporates developmental education needs and completion, interim measures of success, and transfer to other institutions including private and out-of-state institutions. Detailed institutional reports are part of the annual Performance Accountability Report submissions

The Degree Progress Analysis cohort includes full- and part-time students who attempt at least 18 credit hours (including developmental courses) within the first two years after initial matriculation.

Student outcomes for the Degree Progress Analysis are identified based on student data obtained by institutions from the National Student Clearinghouse, and include student enrollment and graduation activity at both in-state and out-of-state institutions.

Totals for the Degree Progress Analysis reflect summation of cohort data as reported by the colleges, and derived percentages are based solely on the reporting institutions.

For the Degree Progress Analysis, "College ready" are students who were assessed not to need remediation in any subject area. "Developmental completers" are students who were assessed to need remediation in at least one subject area and completed all required remedial coursework. "Developmental non-completers" are students who were assessed to need remediation in at least one subject area and did not complete all required remedial coursework.

For the Degree Progress Analysis, "Successful persisters" are students who, within four years after initial enrollment, have completed at least 30 credit hours with a GPA of 2.00 or better, have graduated and/or transferred, or are still enrolled at the institution.

## Degrees

Degree data exclude all certificates other than Lower-Division Certificates (i.e., Upper Division Certificates, Post-Baccalaureate Certificates, and Certificates of Advanced Study). Additionally, students earning multiple degrees at the same level but in multiple majors (e.g., a Bachelor's Degree in two different subjects) are counted once for that degree level. Students earning multiple degrees at multiple levels (e.g., both a Bachelor's Degree and a Master's Degree) are counted at each degree level.

First-professional degrees are included in doctoral degree figures.

Degree major programs are defined using the HEGIS classification system, with Maryland's unique alterations. Program codes are established by MHEC, based upon institutional recommendation, at time of programmatic approval.

## Faculty and Staff

Faculty and staff may be employed at more than one institution. They are included in figures for each institution by which they are employed.

Faculty and staff categories are based upon IPEDS Principal Occupational Assignment classifications. Employees classified as Graduate Assistants - Teaching (IPEDS Category 19) are not included in either faculty or staff figures.

The faculty category includes those classified as Instruction (IPEDS category 15) and Instruction combined with Research and/or Public Service (IPEDS category 16). Faculty members categorized as Research (IPEDS category 17), and Public Service (IPEDS category 18) are not included in these figures. Additionally, pre-clinical and clinical medicine faculty (IPEDS Program Assignment category 98) and Continuing Education faculty (IPEDS Program Assignment category 96) are excluded from faculty totals and salary figures.

The staff category excludes all employees classified as Instruction, Instruction Combined with Research and/or Public Service, Research, and Public Service (IPEDS categories 15, 16, 17, and 18), and Graduate Assistants - Teaching (IPEDS Category 19).

Campus and segment salary averages are weighted by the number of faculty at each rank at each institution.

In December 2019, UMGC notified MHEC of a data error affecting 2017 and 2018 submissions that was corrected for the 2019 submission. Prior years' data are not directly comparable.

## Revenues and Expenditures

Revenues and expenditures represent 2020 actuals. Community college data are obtained from the institutional Annual Financial Report that is submitted to the Maryland Higher Education Commission. Four-year institution data are as published in the FY 2022 and prior years' Budget Book.

Full-Time Equivalent students (FTEs) are calculated using a formula applied to full-time and part-time students.

The Coronavirus Aid, Relief, and Economic Security Act (CARES Act) provided funding to institutions to provide supplementary institutional support and emergency financial aid for college students. This funding is excluded from FY 2020 revenue figures.

Community college revenues exclude revenue from auxiliary enterprises and local in-kind appropriations.

Community college "Other" revenue includes State and local grants and contracts, private gifts, sale of educational activities, other sources, and transfers to and from the fund balance.

Four-year public colleges and university "Other" revenue includes state, local, and private grants and contracts, private gifts, sale and services of educational activities, other sources, and transfers to and from fund balance.

University of Maryland Global Campus revenue and FTE figures include overseas tuition revenues and FTEs.

Four-year public college and university expenditures exclude auxiliary and hospital expenditures.

Revenue bonds are not included in Capital Budget Authorization figures.

In FY 2015, FY 2016, and FY 2017, the University System of Maryland Office, through a joint agreement with the Southern Maryland Navy Alliance and the Southern Maryland Higher Education Center, received a total of \$6,011,000 to continue design of the third Classroom/Research Building at the California, MD site.

Figures reflect original authorization amounts. Subsequent budgets may reflect adjusted authorizations.

## Tuition and Fees

Average community college tuition and fees are based on dividing what a full-time student taking 30 credits in an academic year would pay on a "per credit" basis. Tuition and fee charges at some institutions may vary based upon a student's enrollment, so the actual "per-credit" tuition and fees for an individual student may vary slightly from these institutional data. Prior to FY 2016, institutions utilized different methods of incorporating fees into reporting of their tuition and fee data.

Community college "service area" is defined by the institution. A number of community colleges have reciprocal agreements with other jurisdictions, allowing residents of those areas to pay a reduced rate.

Four-year public college and university undergraduate tuition and fees are based on full-time attendance.

Some four-year public colleges and universities revise tuition and fees after initial approval. Final tuition and fee rates may differ.

Four-year public college and university tuition rates are based on the "standard" undergraduate tuition and fees schedules. Some specialized academic programs may charge differential rates, which are not included. The University of Maryland, Baltimore average reflects the unweighted average of undergraduate programs.

Four-year public college and university graduate tuition rates are based on the "standard" graduate tuition and fees schedules. Some specialized academic programs may charge differential rates, which are not included. The University of Baltimore and University of Maryland, Baltimore are excluded due to widely varying tuition rates.

## Financial Aid

Financial aid data are based upon a randomly unduplicated financial aid file that creates one record per student statewide. Students enrolled at multiple institutions are randomly assigned to one of these institutions. Aid amounts and counts may be slightly lower than actual awards due to student enrollment in multiple institutions.

Data reflect student financial aid awarded by institutions. Some students may have been awarded aid that was not disbursed.

All aid programs use a unique code. Those codes are used to create aid categories and to delineate graduate and undergraduate aid.

Students may receive aid at both the undergraduate and graduate levels. Only undergraduate-level aid is included in tables for financial aid awards at community colleges and public four-year institutions.

The "Other" race/ethnicity category includes students identifying as American Indian/Alaska Native, Native Hawaiian/Pacific Islander, and Two or More Races. It also includes foreign students and students with a race/ethnicity that is unknown.

Students are identified as "dependent" or "independent" based upon information contained in their Free Application for Federal Student Aid (FAFSA). Dependent student status and independent student status do not sum to 100% as not all recipients file a Federal Student Aid (FAFSA) form.

Adjusted Gross Income and Average Need are calculated using information obtained from the FAFSA. These data may be incomplete for those students who do not file a FAFSA form.

Student characteristics data include only students receiving undergraduate aid and do not reflect the entire student population, as students not receiving aid are not included in the data file.

Financial aid program expenditures reflect actual awards made to students in FY 2020. Prior year adjustments may be included in award amounts.

Financial aid program expenditures include all undergraduate- and graduate-level aid awarded through Maryland financial aid programs. This includes aid awards made to students at community colleges, four-year public colleges and universities, independent institutions, other private institutions, and private career schools, dependent upon program eligibility criteria.

Students can receive more than one award. Number of recipients includes those who received the award; not all students who are awarded aid accept it.

### **Private Career Schools**

Some private career schools that continue in operation have been omitted from this list because data was not submitted in a timely fashion.

Subsequent school closures may have taken place prior to publication. Data may be missing due to school closures and data may be present although a school is no longer in operation.

Enrollment represents students enrolled from July 1, 2018 through June 30, 2019.

Number of completers represent all students completing programs from July 1, 2018 through June 30, 2019.

Employment rates are calculated by dividing the number of completers employed between July 1, 2018 and June 30, 2019 by the total number of completers during that time period. These do not necessarily represent the employment rate of any specific cohort.

MHEC is unable to calculate an employment rate for Real Estate Schools (marked with # symbol). These schools are required to provide test passage/license pass rates rather than employment data to MHEC.

### **Distance Education**

Data are submitted by institutions in a survey aggregated to the institutional level. Due to the method of collection, it is not possible to track student enrollment across institutions. Students are included in figures for each institution at which they are enrolled.

CY = Calendar Year. Data represent enrollment in the 2019 Calendar Year.

Distance education includes all course delivery methods where at least 50% of the instruction/interaction is technology-mediated and/or electronically-delivered.

Distance education enrollments include all instances of enrollment in distance education courses. Students enrolled in multiple courses are counted for each course in which they enrolled.

Distance education credit-bearing course sections include all credit-bearing sections offered by distance education methods during the calendar year. Totals may include multiple sections per course.

Headcount student enrollment is unduplicated at the institutional level. Each student is counted only once throughout the calendar year, regardless of the number of terms or the number of courses in which a student enrolled.

"Traditional Only" student headcounts include those students enrolled in traditional classroom-based courses only, which have 50% or more of their instruction/interaction in a traditional classroom or face-to-face setting, with specified meeting times and a standard location.

"Distance Only" student headcounts include those students enrolled in courses delivered via distance education only during the time period specified.

"Mixed - Both Distance and Traditional" student headcounts include those students who enrolled in at least one traditional classroom-based course and one distance education course during Calendar Year 2019.





**Maryland Higher Education Commission**

6 North Liberty Street, 10<sup>th</sup> Floor

Baltimore, MD 21201

[www.mhec.maryland.gov](http://www.mhec.maryland.gov)

410.767.3300

800.974.0203

TTY: 800.735.2258

Larry Hogan, Governor • Boyd K. Rutherford, Lt. Governor  
James D. Fielder, Jr., Ph.D., Secretary